

**REFLECTED CEILING PLAN**

**GENERAL NOTES**

- CONTRACTOR, ELEC. SUB-CONTRACTOR AND OWNER TO COORDINATE THE EXTENT OF WORK RELATING TO NEW LIGHTING AS BASE BLDG. CONTRACTOR SHALL INSTALL JUNCTION BOXES FOR NEW LIGHT FIXTURES AT LOCATIONS INDICATED.
- THE OWNER HAS NEW FIRE ALARM / SECURITY EQUIPMENT BEING INSTALLED WITHIN THE WORK AREA UNDER A SEPARATE CONTRACT. THE CONTRACTOR AND ELEC. SUB-CONTRACTOR SHALL ONLY PROVIDE SUCH WORK AS INDICATED ON THESE DRAWINGS.
- NEW LAY-IN CEILING ASSEMBLIES WILL BE SEISMICALLY BRACED BY SECURING PENETRATOR TRIM TO VERTICAL WALLS (EITHER NEW OR EXIST.) W/ TEC SCREWS SPACED 32" O.C. (NOTE THAT THERE ARE NO CEILING GRID SPANS WHICH EXCEED 12 FT. BETWEEN PENETRATOR WALLS).
- NOTE THAT LAY-IN CEILING WORK WILL BE INSTALLED AT SUCH A TIME AS WHEN WORK CAN BE ACCOMMODATED AND DOES NOT NECESSARILY COMPLY WITH THE PHASED WORK ZONES AS INDICATED IN THE D-DESIGNATED DRAWINGS.

**KEYED PLAN NOTES**

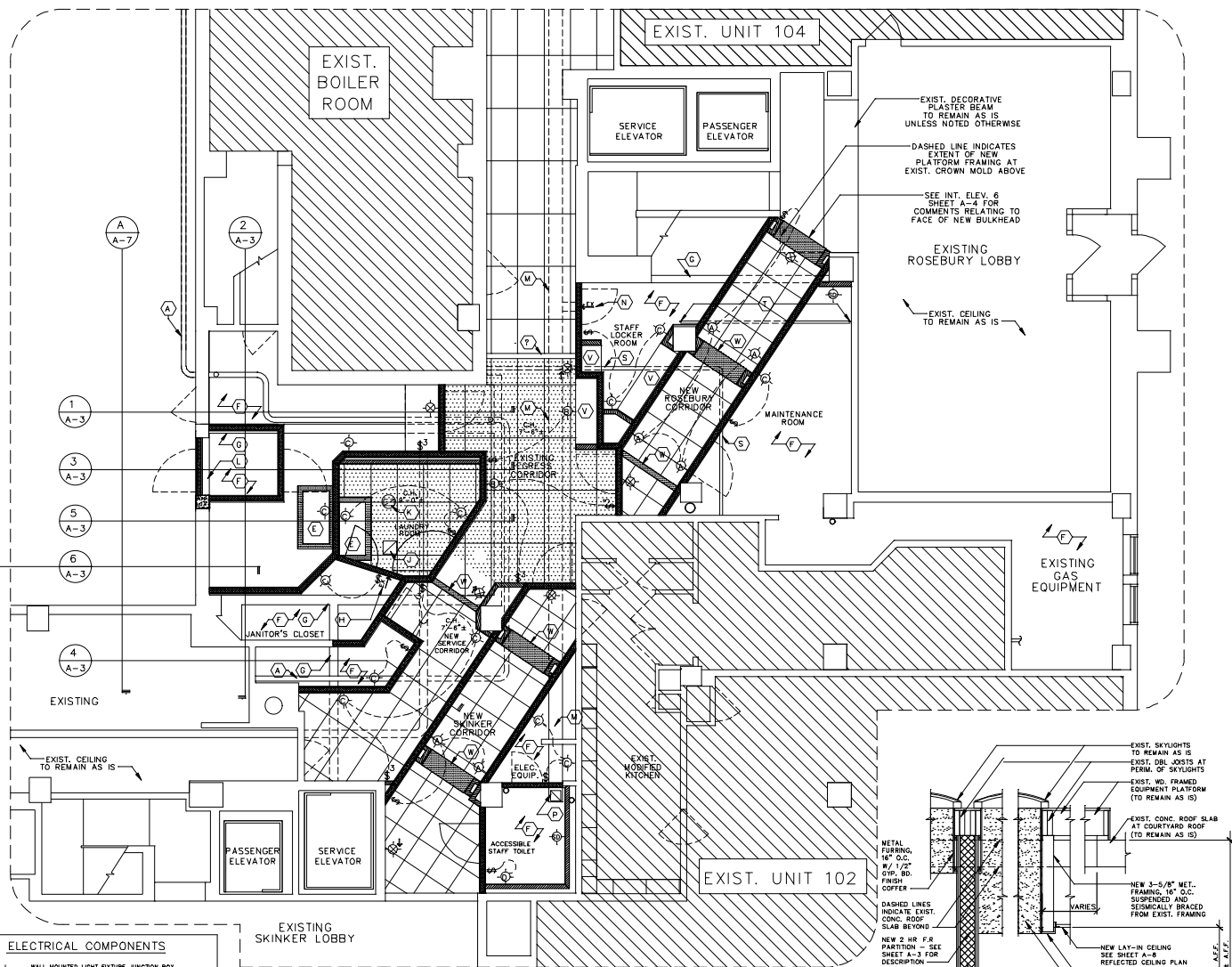
- (A) EXIST. FIRE PROTECTION SYSTEM STANDPIPE LINE, TO REMAIN AS IS. PROVIDE F.R. SLEEVE AS REQ'D WHERE-EVER THE EXIST. LINE PENETRATES A NEW F.R. WALL ASSEMBLY
- (B) DASHED LINE INDICATES EXIST. FIRE PROTECTION SYSTEM STANDPIPE LINE, ABOVE NEW CEILINGS, TO REMAIN AS IS.
- (C) EXIST. MECH. PIPE TO REMAIN AS IS. PROVIDE F.R. SLEEVE AS REQ'D WHERE-EVER THE EXIST. PIPE PENETRATES A NEW F.R. WALL ASSEMBLY
- (D) DASHED LINE INDICATES EXIST. MECH. PIPE, ABOVE NEW CEILING TO REMAIN AS IS.
- (E) EXIST. SKYLIGHT, TO REMAIN AS IS.
- (F) PROVIDE NEW COFFERS. SEE DETAIL A, THIS SHEET
- (G) EXIST. CONC. STRUCT. ABOVE, TO REMAIN EXPOSED
- (H) EXIST. CONC. BEAMS AT CEILING ABOVE, TO REMAIN AS IS
- (I) EXHAUST JANITOR'S CLOSET THRU WALL LOUVER TO CEILING SPACE ABOVE LAUNDRY ROOM (SEE KEY NOTE K). MECHANICAL SUBCONTRACTOR TO DETERMINE LOUVER SIZE.
- (J) EXHAUST LAUNDRY ROOM THRU CEILING LOUVER TO CEILING SPACE ABOVE (SEE KEY NOTE K).
- (K) MECH. SUBCONTRACTOR TO DETERMINE LOUVER SIZE.
- (L) EXHAUST CEILING SPACE ABOVE LAUNDRY ROOM TO EXTERIOR BY MEANS OF NEW ROOF MOUNTED EXHAUST FAN. SEE SHEET A-2 FOR RELATED COMMENTS.
- (M) BOTTOM OF STRUCTURAL CONC. BEAM NOW EXPOSED BY NEW WALL OPENINGS.
- (N) DASHED LINE INDICATES EXIST. ABANDONED EXHAUST DUCT INSTALLED ABOVE CEILING. MECH. SUBCONTRACTOR TO FIELD VERIFY DUCT SIZE AND RE-USE DUCT FOR NEW EXHAUST REQUIREMENTS. SEE SHEET DA-1, KEYED NOTE G; FOR RELATED COMMENTS.
- (O) PROVIDE THRU-WALL EXHAUST VENT & RELATED DUCT CONNECTION. MECHANICAL SUBCONTRACTOR TO CALCULATE EXHAUST REQUIREMENTS. SEE INTERIOR ELEVATIONS, SHEET A-4 FOR RELATED COMMENTS.
- (P) MESSY EXIST. EXHAUST DUCT, TO PROVIDE NEW EXHAUST VENT. MECH. SUBCONTRACTOR TO CALCULATE VENT SIZE.
- (Q) PROVIDE EITHER CEILING MOUNTED (OR DIRECT DRYER CONNECTION) EXHAUST VENT. MECH. SUBCONTRACTOR TO CALCULATE EXHAUST REQUIREMENTS.
- (R) DASHED LINE INDICATES NEW EXHAUST DUCT INSTALLED ABOVE NEW CEILING AND ROUTED TO VENT THRU EXIST. WALL LOUVERS AT NORTH WALL OF BUILDING. MECH. SUBCONTRACTOR TO CALCULATE DUCT SIZE AND COORDINATE VENT REQUIREMENTS AT EXIST. LOUVERS.
- (S) DASHED LINE INDICATES EXIST. MECH. PIPE TO REMAIN AS IS. CONSTRUCT NEW PARTITION AROUND SUCH AND AS REQ'D.
- (T) DASHED LINE INDICATES NEW "OVER" PORTION OF NEW "OVER-UNDER" LOOP OF CONDENSATE RETURN SPRING. SEE FIRST FLOOR PLAN, SHEET A-1; FOR RELATED COMMENTS.
- (V) PROVIDE MET. STUD & DYP. BD. SOFFITS AND BULKHEADS AS REQ'D ABOVE RELATED ITEMS. SEE FIRST FLOOR PLAN, SHEET A-1 FOR RELATED COMMENTS.
- (W) NEW DYP. BD. MET. STUD BULKHEADS, AT 7'-0" A.F.F., U.G.O.

**TYPICAL SYMBOLS**

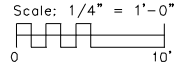
- EXISTING WALLS AND PARTITIONS, TO REMAIN AS IS, U.G.O.\*
- \* SEE SHEET A-1 FOR TYPICAL SYMBOLS FOR NEW PARTITIONS
- KEYED PLAN NOTES
- EXISTING DOORS BELOW TO REMAIN AS IS, U.G.O.
- NEW DOORS BELOW
- AREA SHOWN THUSLY INDICATES NEW DECORATIVE LAY-IN CEILING ASSEMBLIES W/ 2" x 4" GRID APPEARANCE; SEE SPECS, DIV. 8 FOR RELATED COMMENTS
- AREA SHOWN THUSLY INDICATES NEW GENERAL LAY-IN CEILING ASSEMBLIES W/ 2" x 4" GRID APPEARANCE; SEE SPECS, DIV. 8 FOR RELATED COMMENTS
- AREA SHOWN THUSLY INDICATES EXIST. 2 x 4 LAY-IN CEILING ASSEMBLY TO REMAIN AS IS, U.G.O.
- WALL MOUNTED LIGHT FIXTURE JUNCTION BOX SEE INTERIOR ELEVATIONS FOR RELATED COMMENTS - DESIGNATES FIXTURE TYPE (SEE SPECS, DIVISION 16)
- LIGHT SWITCH; WALL MOUNTED 40" A.F.F. MAX.
- DESIGNATES 3 WAY SWITCH
- WALL MOUNTED EXIST. LIGHT; ELEC. SUBCONTRACTOR TO W/ OWNER TO MATCH MAKE AND MODEL OF EXIST LIGHTS CURRENTLY IN USE AT BUILDING
- PROVIDE DIRECTIONAL ARROWS AT LOCATIONS INDICATED
- C.H. 7'-6" INSTALL NEW CEILING AT CEILING HEIGHT (C.H.) INDICATED ABOVE FLOOR ELEV. 101'-0"

**ELECTRICAL COMPONENTS**

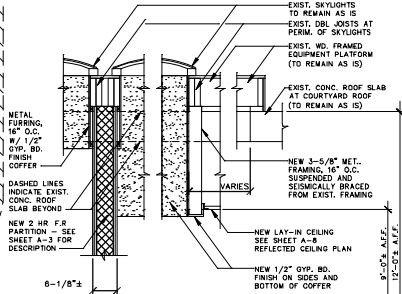
- WALL MOUNTED LIGHT FIXTURE JUNCTION BOX SEE INTERIOR ELEVATIONS FOR RELATED COMMENTS - DESIGNATES FIXTURE TYPE (SEE SPECS, DIVISION 16)
- LIGHT SWITCH; WALL MOUNTED 40" A.F.F. MAX.
- DESIGNATES 3 WAY SWITCH
- WALL MOUNTED EXIST. LIGHT; ELEC. SUBCONTRACTOR TO W/ OWNER TO MATCH MAKE AND MODEL OF EXIST LIGHTS CURRENTLY IN USE AT BUILDING
- PROVIDE DIRECTIONAL ARROWS AT LOCATIONS INDICATED



**PARTIAL FIRST FLOOR REFLECTED CEILING PLAN**  
Scale: 1/4" = 1'-0"



**DETAIL AT SKYLIGHT COFFER**  
Scale: 3/4" = 1'-0"



ARCHITECT  
ROBERT BRAUCH  
REGISTERED ARCHITECT  
STATE OF MISSOURI  
LICENSE NO. - R-004982

ARCHITECT  
ROBERT BRAUCH  
4960 NEEDSH  
ST. LOUIS, MO 63109  
(314) 481-1920

CORRIDOR MODIFICATIONS  
VERSAILLES CONDOS  
701 SKINKER AVE.  
ST. LOUIS, MO 63112

Date Issued: 01/31/14  
Addendum:  
#1 02/28/14  
#2 03/03/14  
#3 05/31/14

SHEET NO.  
A-6  
Page 11 of 13