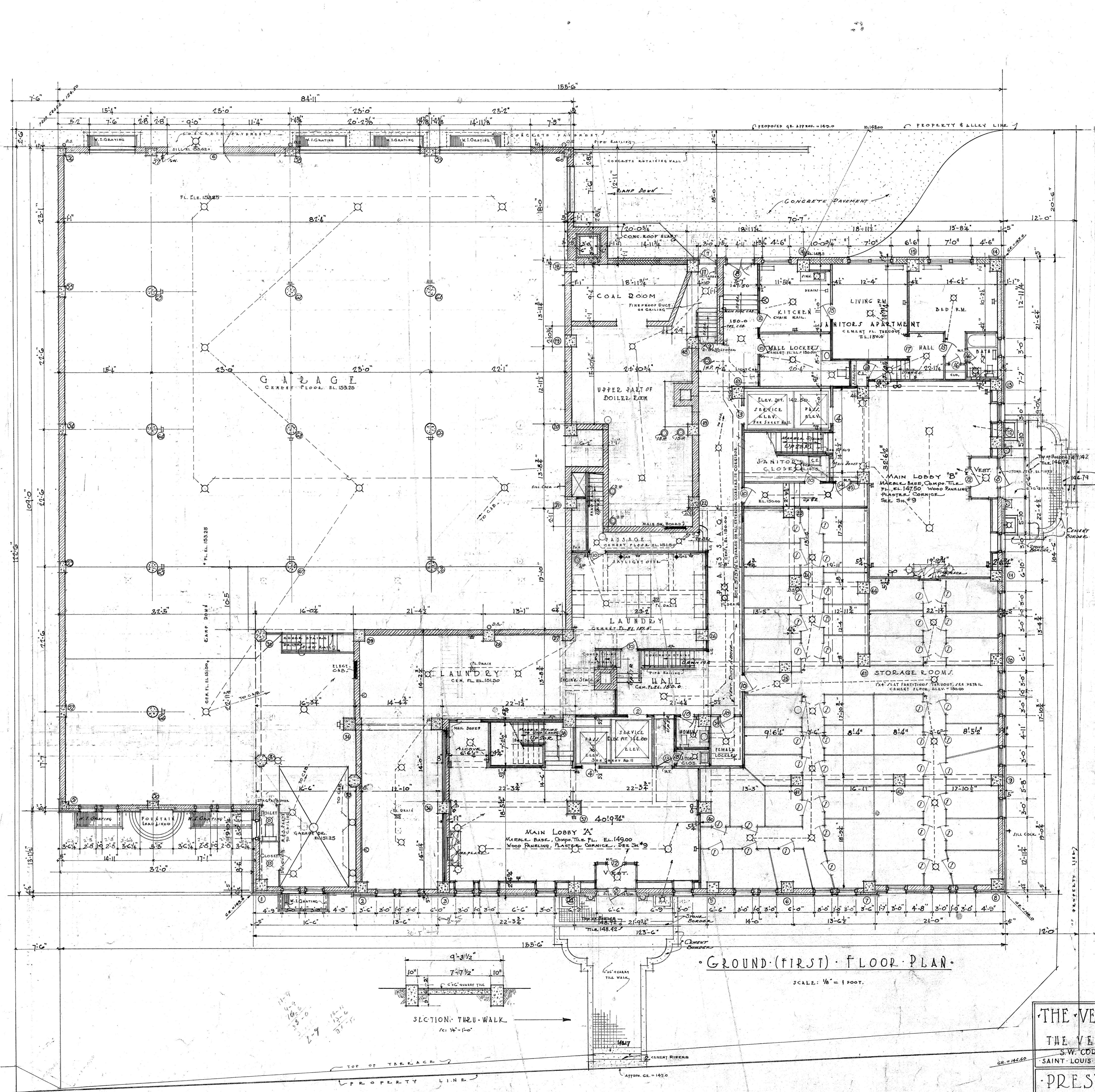


COAL CHUTE, 12'-10"
STEEL DOOR & FRAME

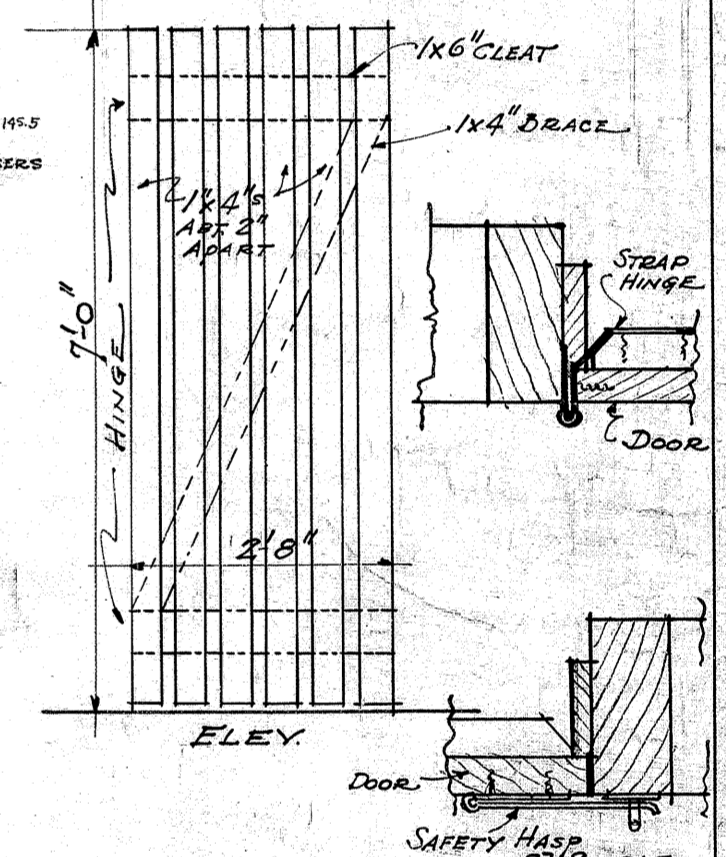


GROUND (FIRST) FLOOR PLAN

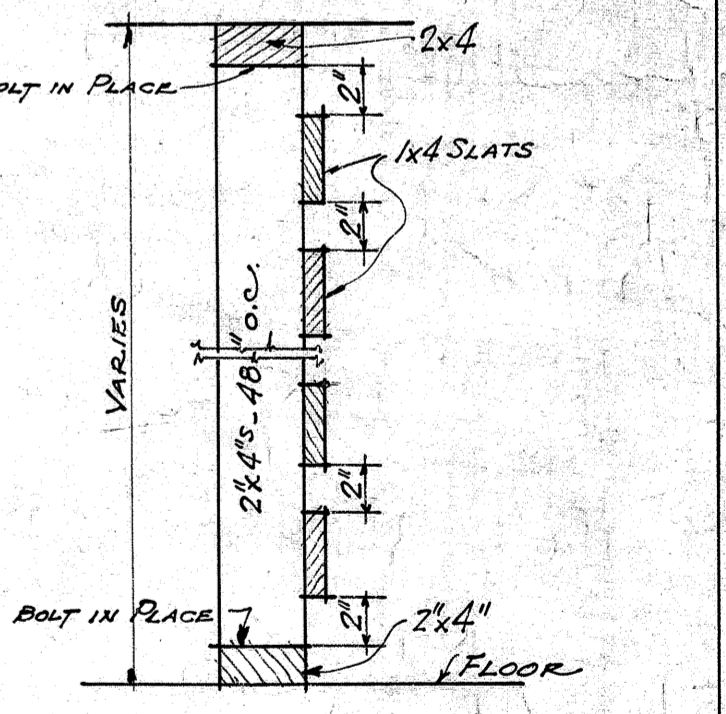
SCALE: 1/8" = 1 FOOT.

DOOR SCHEDULE

1	2'-8" x 7'-0"	SLAT DOOR, SEE DETAIL
2	2'-8" x 7'-0"	2 DOOR, KALAMIN, DOUBLE PANEL, ELEV. DOOR
3	2'-8" x 7'-0"	2 DOOR, KALAMIN, SINGLE PANEL, ELEV. DOOR
4	2'-8" x 7'-0"	SINGLE DOOR, HOLLOW MET. MIRROR DOOR, SEE ELEVATION IN '9'
5	2'-8" x 7'-0"	GLASS PANEL, WIRE, AND OUTSIDE W/HT, SEE DETAIL
6	2'-8" x 7'-0"	SLIDING DOOR, WIRE, W/HT, SEE DETAIL
7	2'-8" x 7'-0"	SOLID PAN., KALAMIN, L. FRAME, LOWER PART, GLASS PANEL, BASIC, PLAIN BELOW
8	2'-8" x 7'-0"	7/8" GLASS, LABELED - E FRAME, W/HT
9	2'-8" x 7'-0"	5 CROSS PANEL, Y.P.
10	2'-8" x 7'-0"	2 LIGID PAN. - BIRCH VENEER, BOTH SIDES
11	2'-8" x 7'-0"	3-2X7-0 GLASS PANEL, WALNUT VENEER, BOTH SIDES
12	2'-8" x 7'-0"	2 LIGID PAN. - BIRCH VENEER, BOTH SIDES
13	2'-8" x 7'-0"	2 LIGID PAN. - BIRCH VENEER, BOTH SIDES
14	2'-8" x 7'-0"	2 LIGID PAN. - BIRCH VENEER, BOTH SIDES
15	2'-8" x 7'-0"	2 LIGID PAN. - BIRCH VENEER, BOTH SIDES
16	2'-8" x 7'-0"	2 LIGID PAN. - BIRCH VENEER, BOTH SIDES
17	2'-8" x 7'-0"	2 LIGID PAN. - BIRCH VENEER, BOTH SIDES
18	2'-8" x 7'-0"	2 LIGID PAN. - BIRCH VENEER, BOTH SIDES
19	2'-8" x 7'-0"	2 LIGID PAN. - BIRCH VENEER, BOTH SIDES
20	2'-8" x 7'-0"	2 LIGID PAN. - BIRCH VENEER, BOTH SIDES
21	2'-8" x 7'-0"	2 LIGID PAN. - BIRCH VENEER, BOTH SIDES
22	2'-8" x 7'-0"	2 LIGID PAN. - BIRCH VENEER, BOTH SIDES
23	2'-8" x 7'-0"	2 LIGID PAN. - BIRCH VENEER, BOTH SIDES
24	2'-8" x 7'-0"	2 LIGID PAN. - BIRCH VENEER, BOTH SIDES
25	2'-8" x 7'-0"	2 LIGID PAN. - BIRCH VENEER, BOTH SIDES
26	2'-8" x 7'-0"	2 LIGID PAN. - BIRCH VENEER, BOTH SIDES
27	2'-8" x 7'-0"	2 LIGID PAN. - BIRCH VENEER, BOTH SIDES
28	2'-8" x 7'-0"	2 LIGID PAN. - BIRCH VENEER, BOTH SIDES
29	2'-8" x 7'-0"	2 LIGID PAN. - BIRCH VENEER, BOTH SIDES
30	2'-8" x 7'-0"	2 LIGID PAN. - BIRCH VENEER, BOTH SIDES
31	2'-8" x 7'-0"	2 LIGID PAN. - BIRCH VENEER, BOTH SIDES
32	2'-8" x 7'-0"	2 LIGID PAN. - BIRCH VENEER, BOTH SIDES
33	2'-8" x 7'-0"	2 LIGID PAN. - BIRCH VENEER, BOTH SIDES
34	2'-8" x 7'-0"	2 LIGID PAN. - BIRCH VENEER, BOTH SIDES
35	2'-8" x 7'-0"	2 LIGID PAN. - BIRCH VENEER, BOTH SIDES
36	2'-8" x 7'-0"	2 LIGID PAN. - BIRCH VENEER, BOTH SIDES
37	2'-8" x 7'-0"	2 LIGID PAN. - BIRCH VENEER, BOTH SIDES
38	2'-8" x 7'-0"	2 LIGID PAN. - BIRCH VENEER, BOTH SIDES
39	2'-8" x 7'-0"	2 LIGID PAN. - BIRCH VENEER, BOTH SIDES
40	2'-8" x 7'-0"	2 LIGID PAN. - BIRCH VENEER, BOTH SIDES
41	2'-8" x 7'-0"	2 LIGID PAN. - BIRCH VENEER, BOTH SIDES
42	2'-8" x 7'-0"	2 LIGID PAN. - BIRCH VENEER, BOTH SIDES
43	2'-8" x 7'-0"	2 LIGID PAN. - BIRCH VENEER, BOTH SIDES
44	2'-8" x 7'-0"	2 LIGID PAN. - BIRCH VENEER, BOTH SIDES
45	2'-8" x 7'-0"	2 LIGID PAN. - BIRCH VENEER, BOTH SIDES
46	2'-8" x 7'-0"	2 LIGID PAN. - BIRCH VENEER, BOTH SIDES
47	2'-8" x 7'-0"	2 LIGID PAN. - BIRCH VENEER, BOTH SIDES
48	2'-8" x 7'-0"	2 LIGID PAN. - BIRCH VENEER, BOTH SIDES
49	2'-8" x 7'-0"	2 LIGID PAN. - BIRCH VENEER, BOTH SIDES
50	2'-8" x 7'-0"	2 LIGID PAN. - BIRCH VENEER, BOTH SIDES
51	2'-8" x 7'-0"	2 LIGID PAN. - BIRCH VENEER, BOTH SIDES
52	2'-8" x 7'-0"	2 LIGID PAN. - BIRCH VENEER, BOTH SIDES
53	2'-8" x 7'-0"	2 LIGID PAN. - BIRCH VENEER, BOTH SIDES
54	2'-8" x 7'-0"	2 LIGID PAN. - BIRCH VENEER, BOTH SIDES
55	2'-8" x 7'-0"	2 LIGID PAN. - BIRCH VENEER, BOTH SIDES
56	2'-8" x 7'-0"	2 LIGID PAN. - BIRCH VENEER, BOTH SIDES
57	2'-8" x 7'-0"	2 LIGID PAN. - BIRCH VENEER, BOTH SIDES
58	2'-8" x 7'-0"	2 LIGID PAN. - BIRCH VENEER, BOTH SIDES
59	2'-8" x 7'-0"	2 LIGID PAN. - BIRCH VENEER, BOTH SIDES
60	2'-8" x 7'-0"	2 LIGID PAN. - BIRCH VENEER, BOTH SIDES
61	2'-8" x 7'-0"	2 LIGID PAN. - BIRCH VENEER, BOTH SIDES
62	2'-8" x 7'-0"	2 LIGID PAN. - BIRCH VENEER, BOTH SIDES
63	2'-8" x 7'-0"	2 LIGID PAN. - BIRCH VENEER, BOTH SIDES
64	2'-8" x 7'-0"	2 LIGID PAN. - BIRCH VENEER, BOTH SIDES
65	2'-8" x 7'-0"	2 LIGID PAN. - BIRCH VENEER, BOTH SIDES
66	2'-8" x 7'-0"	2 LIGID PAN. - BIRCH VENEER, BOTH SIDES
67	2'-8" x 7'-0"	2 LIGID PAN. - BIRCH VENEER, BOTH SIDES
68	2'-8" x 7'-0"	2 LIGID PAN. - BIRCH VENEER, BOTH SIDES
69	2'-8" x 7'-0"	2 LIGID PAN. - BIRCH VENEER, BOTH SIDES
70	2'-8" x 7'-0"	2 LIGID PAN. - BIRCH VENEER, BOTH SIDES
71	2'-8" x 7'-0"	2 LIGID PAN. - BIRCH VENEER, BOTH SIDES
72	2'-8" x 7'-0"	2 LIGID PAN. - BIRCH VENEER, BOTH SIDES
73	2'-8" x 7'-0"	2 LIGID PAN. - BIRCH VENEER, BOTH SIDES
74	2'-8" x 7'-0"	2 LIGID PAN. - BIRCH VENEER, BOTH SIDES
75	2'-8" x 7'-0"	2 LIGID PAN. - BIRCH VENEER, BOTH SIDES
76	2'-8" x 7'-0"	2 LIGID PAN. - BIRCH VENEER, BOTH SIDES
77	2'-8" x 7'-0"	2 LIGID PAN. - BIRCH VENEER, BOTH SIDES
78	2'-8" x 7'-0"	2 LIGID PAN. - BIRCH VENEER, BOTH SIDES
79	2'-8" x 7'-0"	2 LIGID PAN. - BIRCH VENEER, BOTH SIDES
80	2'-8" x 7'-0"	2 LIGID PAN. - BIRCH VENEER, BOTH SIDES
81	2'-8" x 7'-0"	2 LIGID PAN. - BIRCH VENEER, BOTH SIDES
82	2'-8" x 7'-0"	2 LIGID PAN. - BIRCH VENEER, BOTH SIDES
83	2'-8" x 7'-0"	2 LIGID PAN. - BIRCH VENEER, BOTH SIDES
84	2'-8" x 7'-0"	2 LIGID PAN. - BIRCH VENEER, BOTH SIDES
85	2'-8" x 7'-0"	2 LIGID PAN. - BIRCH VENEER, BOTH SIDES
86	2'-8" x 7'-0"	2 LIGID PAN. - BIRCH VENEER, BOTH SIDES
87	2'-8" x 7'-0"	2 LIGID PAN. - BIRCH VENEER, BOTH SIDES
88	2'-8" x 7'-0"	2 LIGID PAN. - BIRCH VENEER, BOTH SIDES
89	2'-8" x 7'-0"	2 LIGID PAN. - BIRCH VENEER, BOTH SIDES
90	2'-8" x 7'-0"	2 LIGID PAN. - BIRCH VENEER, BOTH SIDES
91	2'-8" x 7'-0"	2 LIGID PAN. - BIRCH VENEER, BOTH SIDES
92	2'-8" x 7'-0"	2 LIGID PAN. - BIRCH VENEER, BOTH SIDES
93	2'-8" x 7'-0"	2 LIGID PAN. - BIRCH VENEER, BOTH SIDES
94	2'-8" x 7'-0"	2 LIGID PAN. - BIRCH VENEER, BOTH SIDES
95	2'-8" x 7'-0"	2 LIGID PAN. - BIRCH VENEER, BOTH SIDES
96	2'-8" x 7'-0"	2 LIGID PAN. - BIRCH VENEER, BOTH SIDES
97	2'-8" x 7'-0"	2 LIGID PAN. - BIRCH VENEER, BOTH SIDES
98	2'-8" x 7'-0"	2 LIGID PAN. - BIRCH VENEER, BOTH SIDES
99	2'-8" x 7'-0"	2 LIGID PAN. - BIRCH VENEER, BOTH SIDES
100	2'-8" x 7'-0"	2 LIGID PAN. - BIRCH VENEER, BOTH SIDES



SLAT DOORS No. 1
1/2" & 3" = 1'-0"



TYPICAL LOCKER PARTITION
12'-10"

NOTE: All figures & memoranda to be checked by Contractor and errors referred to Architect for correction.

THE VERSAILLES APARTMENTS
FOR
THE VERSAILLES BUILDING CO.
S.W. COR. SKINKER & ROSEBURY AVES.
SAINT LOUIS, MISSOURI

Job. No. 428
DATE APR. 12-26
REVISED 7-30-27
7-17

PRESTON J. BRADSHAW
ARCHITECT
INTERNATIONAL LIFE BLDG. ST. LOUIS, MO.

SHEET No. **1**