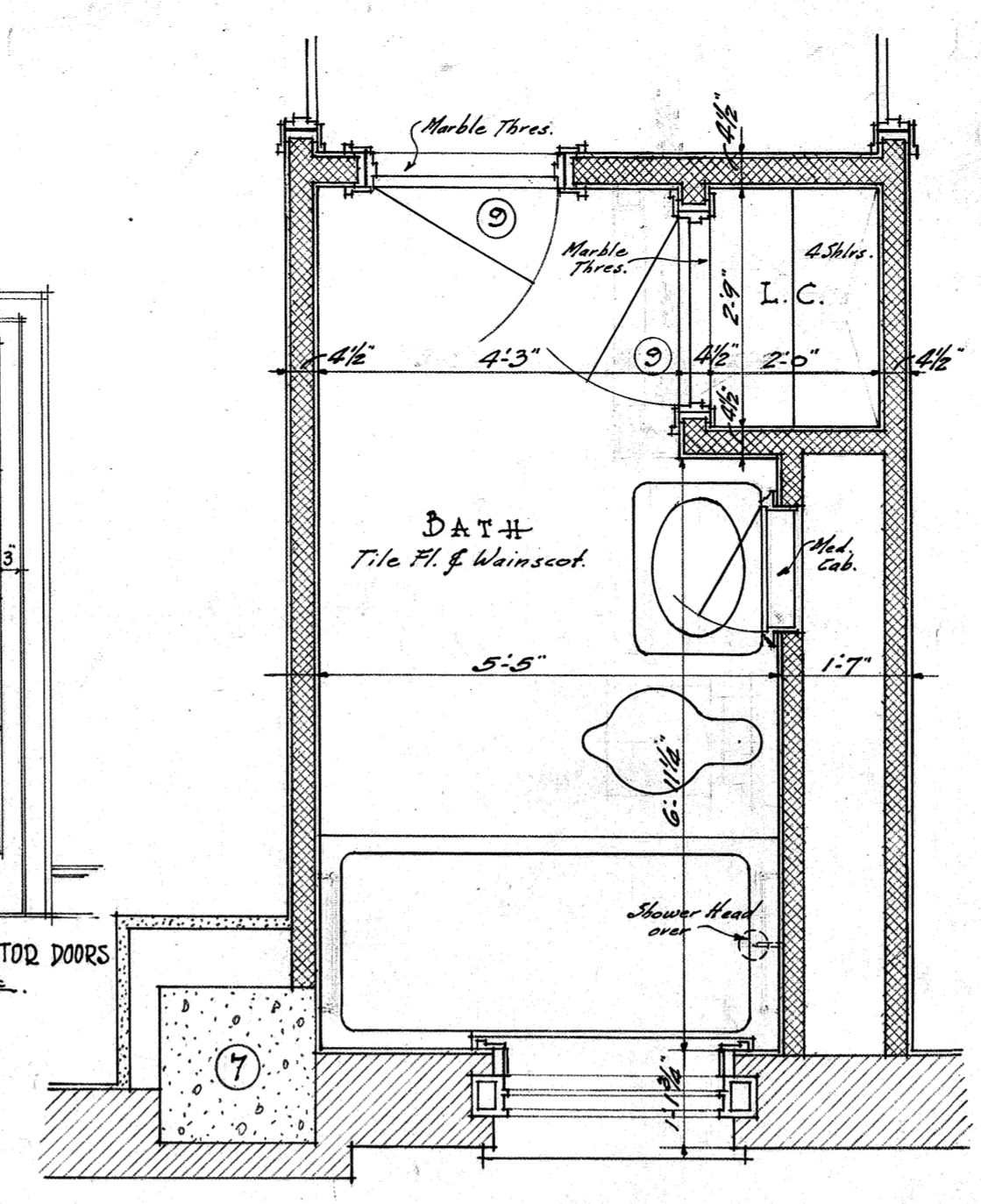
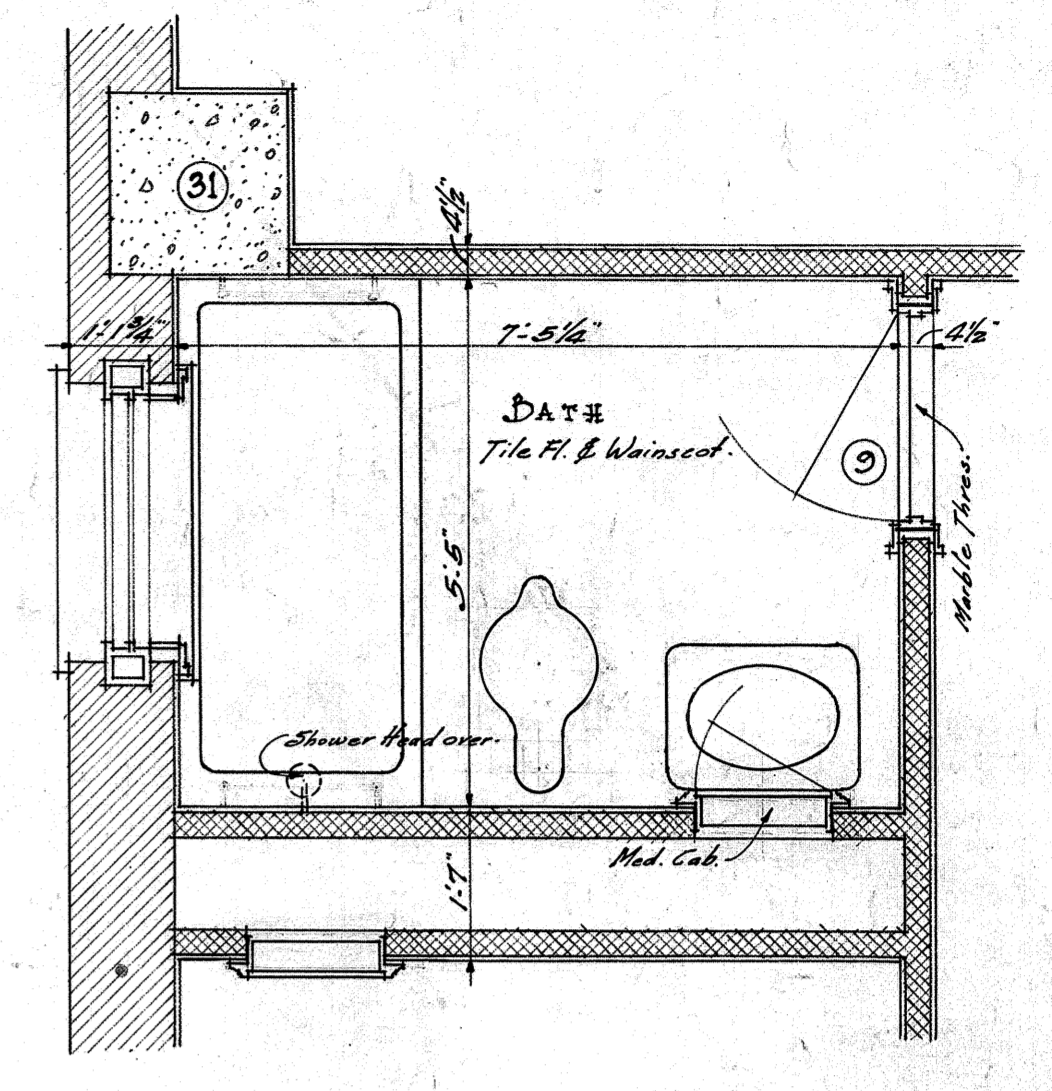


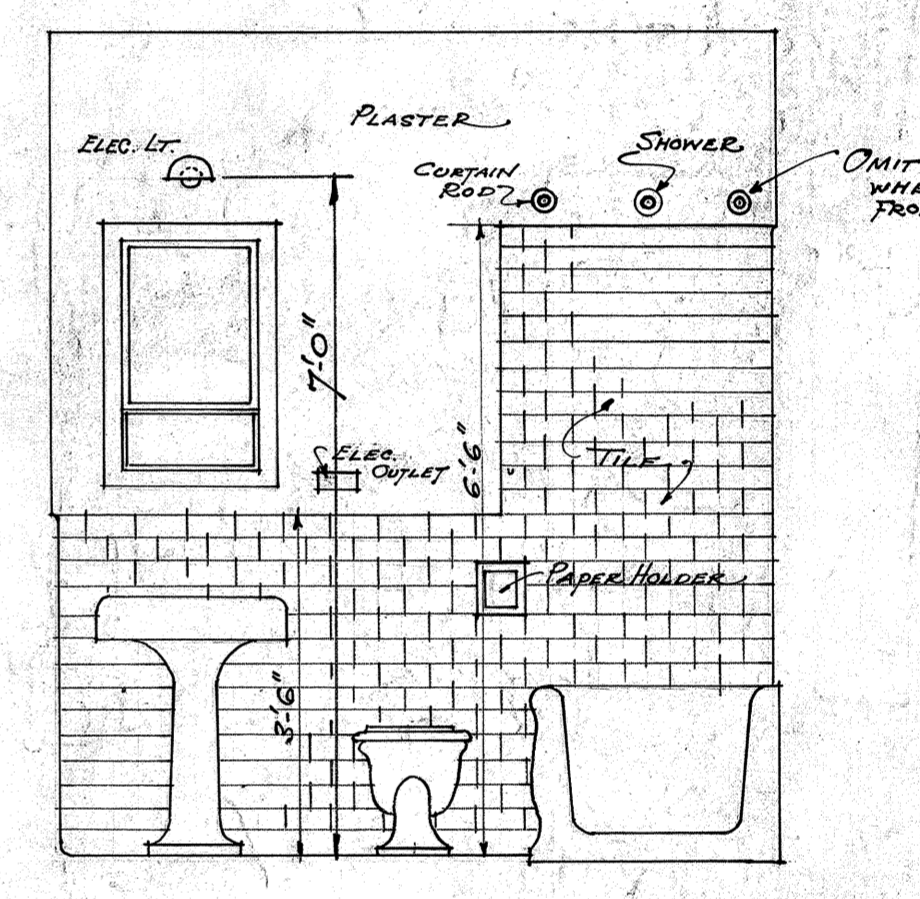
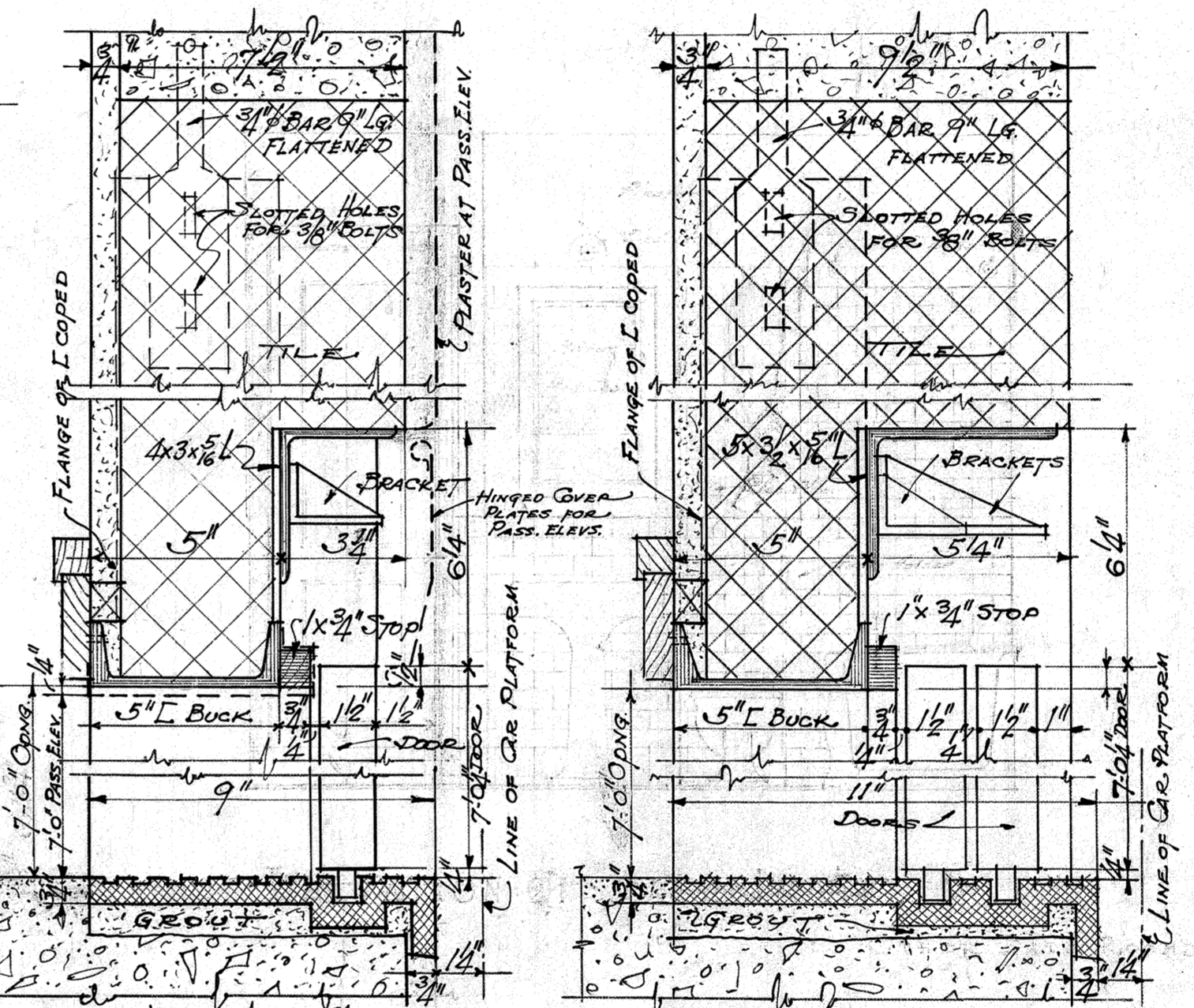
1/2 SCALE TYPICAL PLAN OF ELEVATORS, STAIRS, ETC. AT LOBBY "A"



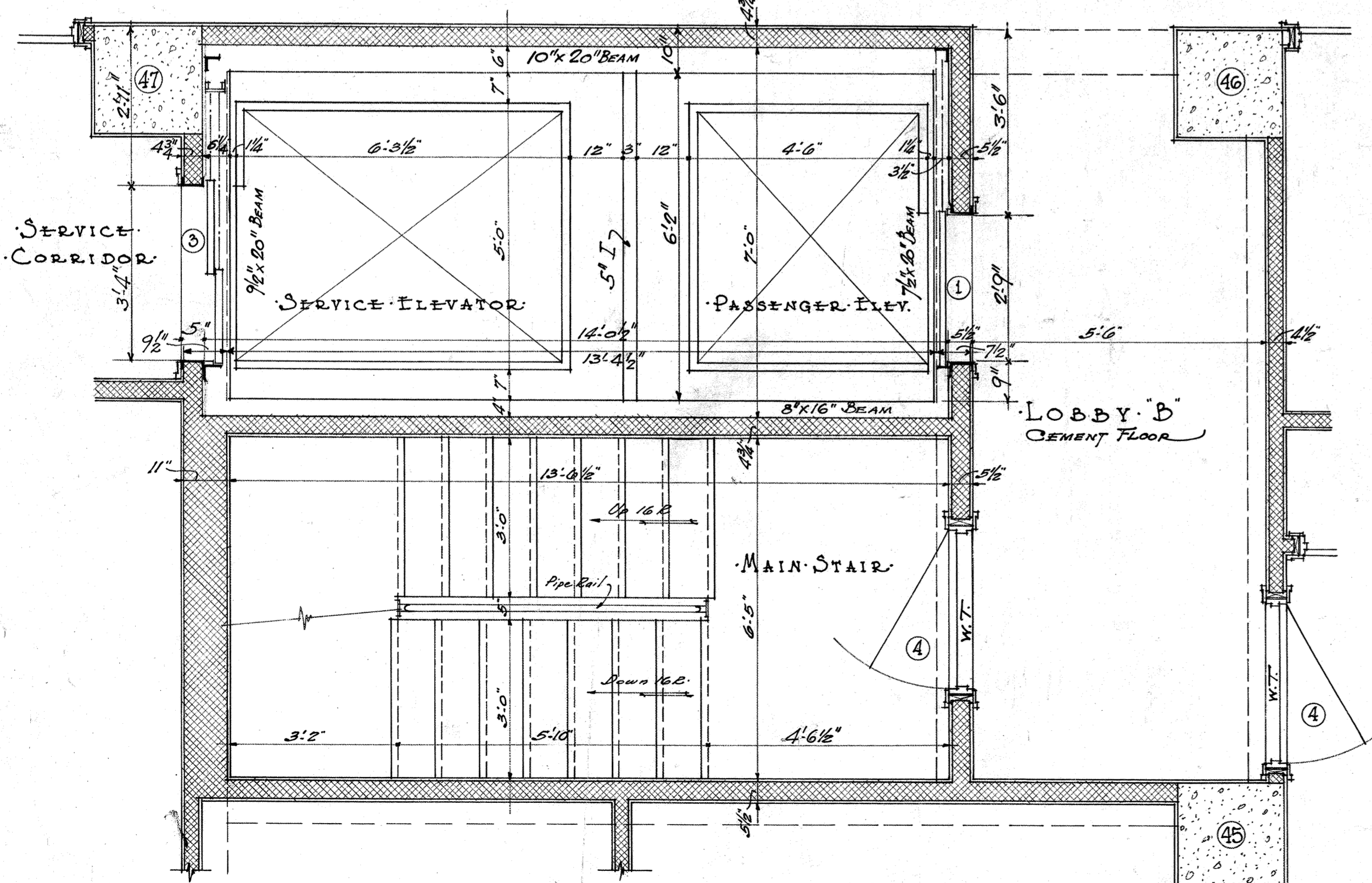
1/2 SCALE PLAN OF BATH IN APT. "B"



1/2 SCALE PLAN OF BATH IN APT. "A"



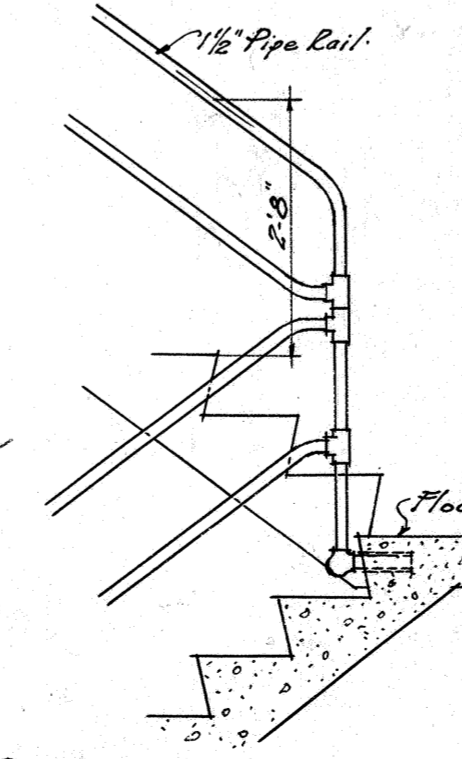
ELEV. OF BATH IN APT. "A"



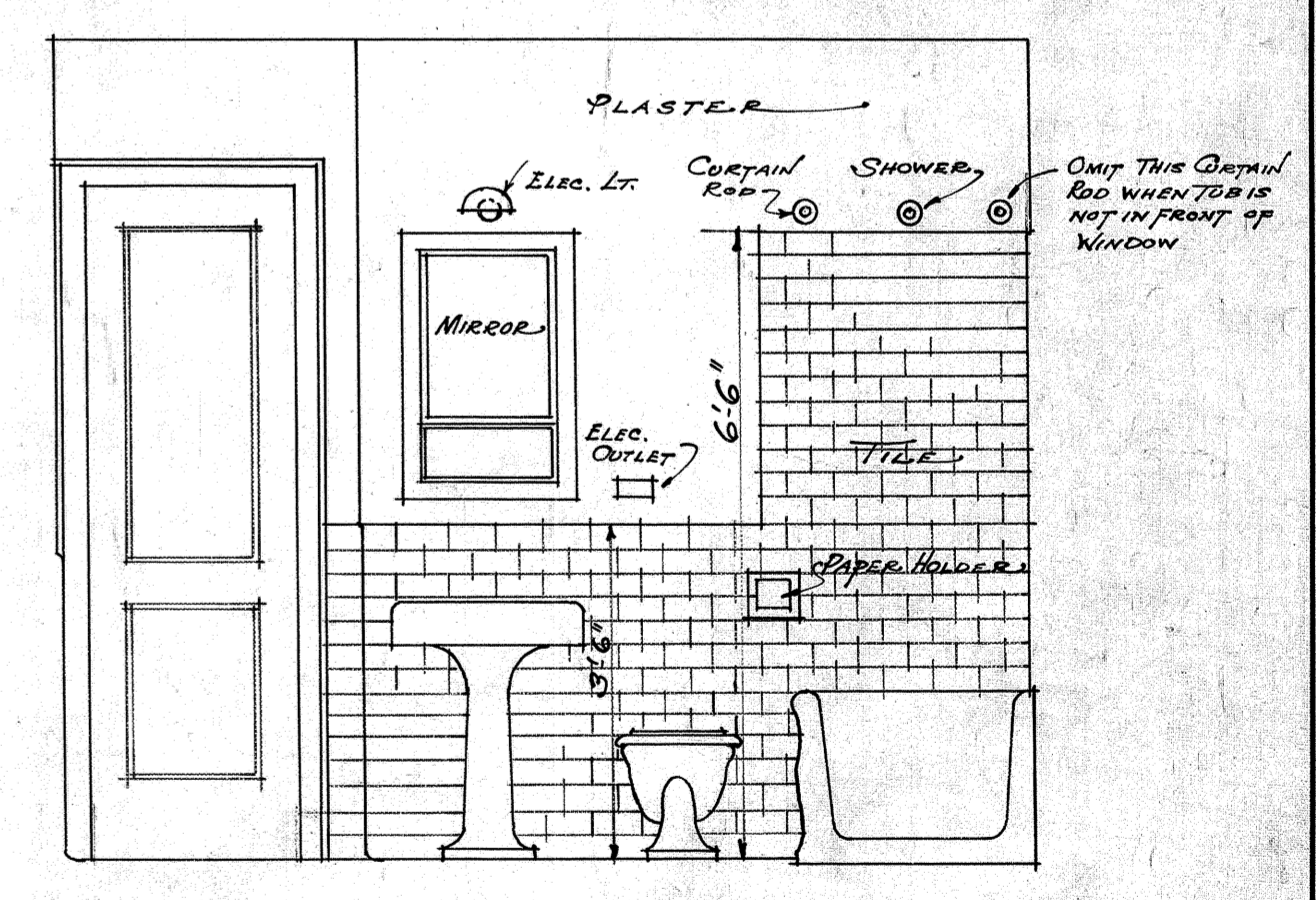
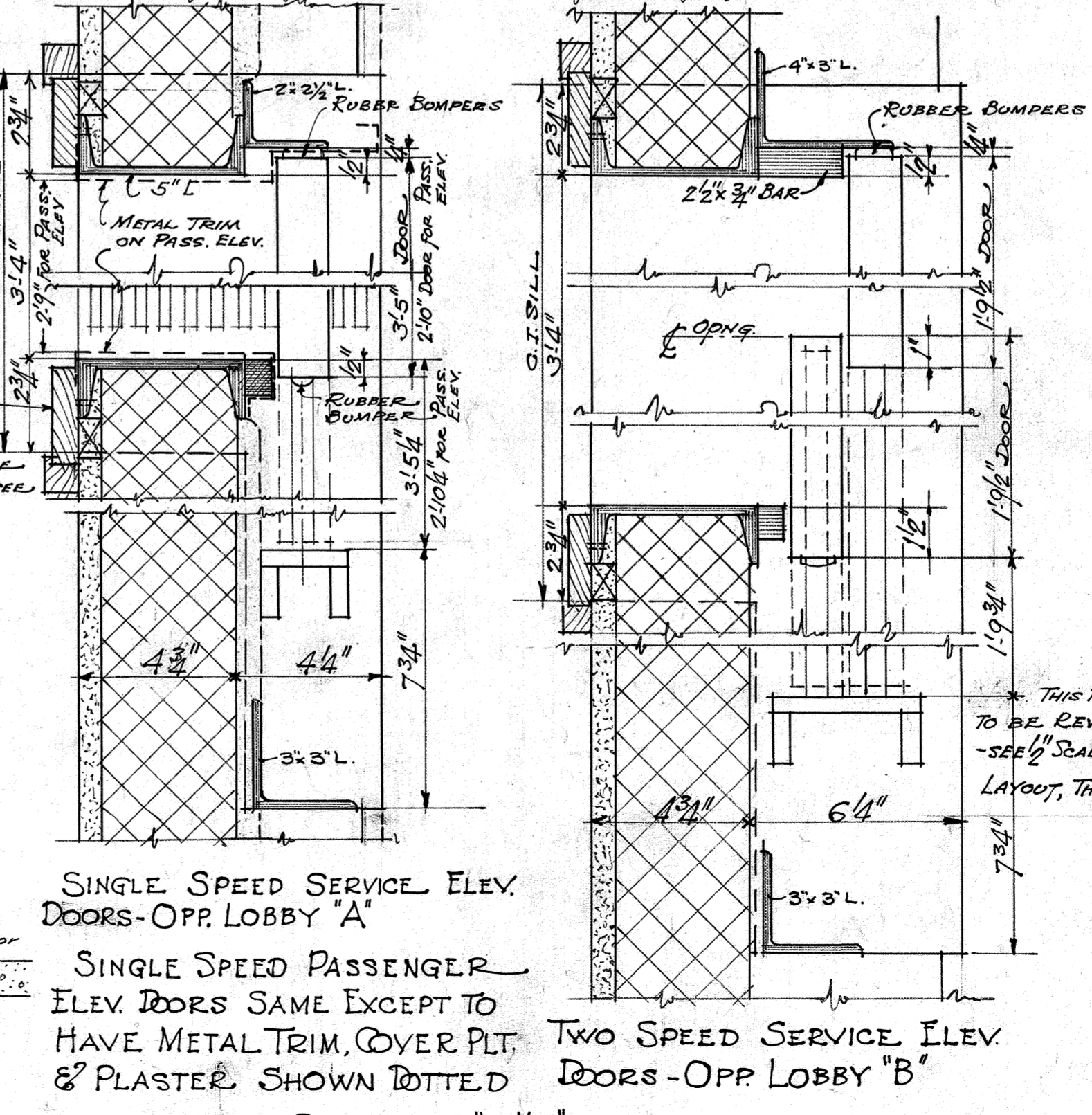
1/2 SCALE TYPICAL PLAN OF ELEVATORS & STAIRS AT LOBBY "B"

TAP HEAD & JAMB FLANGES ON CORRIDOR SIDE OF L FRAMES WITH 3/16" THREADED HOLES FOR SECURING TRIM

NOTE! INSTEAD OF WOOD TRIM SHOWN THE PASS. ELEVATORS AT LOBBIES ON FIRST FL. WILL HAVE SPECIAL WOOD TRIM - SEE SHEET NO.



DETAIL OF STAIR RAIL SCALE - 1/2" = 1'-0"



ELEV. OF BATH IN APT. "B" 1/2" = 1'-0" OTHER BATH ROOMS SIMILAR

NOTE: All figures & memoranda to be checked by Contractor and errors referred to Architect for correction.

THIS PLAN TO BE REVERSED IN PLAN - SEE 1/4" SCALE ELEVATOR LAYOUT, THIS SHEET

SINGLE SPEED SERVICE ELEV. DOORS - OPP. LOBBY "A"  
 SINGLE SPEED PASSENGER ELEV. DOORS SAME EXCEPT TO HAVE METAL TRIM, COVER PLT. & PLASTER SHOWN DOTTED  
 TWO SPEED SERVICE ELEV. DOORS - OPP. LOBBY "B"

SCALE 3/4" = 1'-0"

THE VERSAILLES APARTMENTS		Job No. 428
FOR THE VERSAILLES BUILDING CO.		DATE APR 12-26
S.W. COR. SKINKER & ROSEBURY AVES. SAINT LOUIS, MISSOURI		REVISED 2-22-27
PRESTON J. BRADSHAW ARCHITECT		SHEET NO. 11
INTERNATIONAL LIFE BLDG. ST. LOUIS, MO		