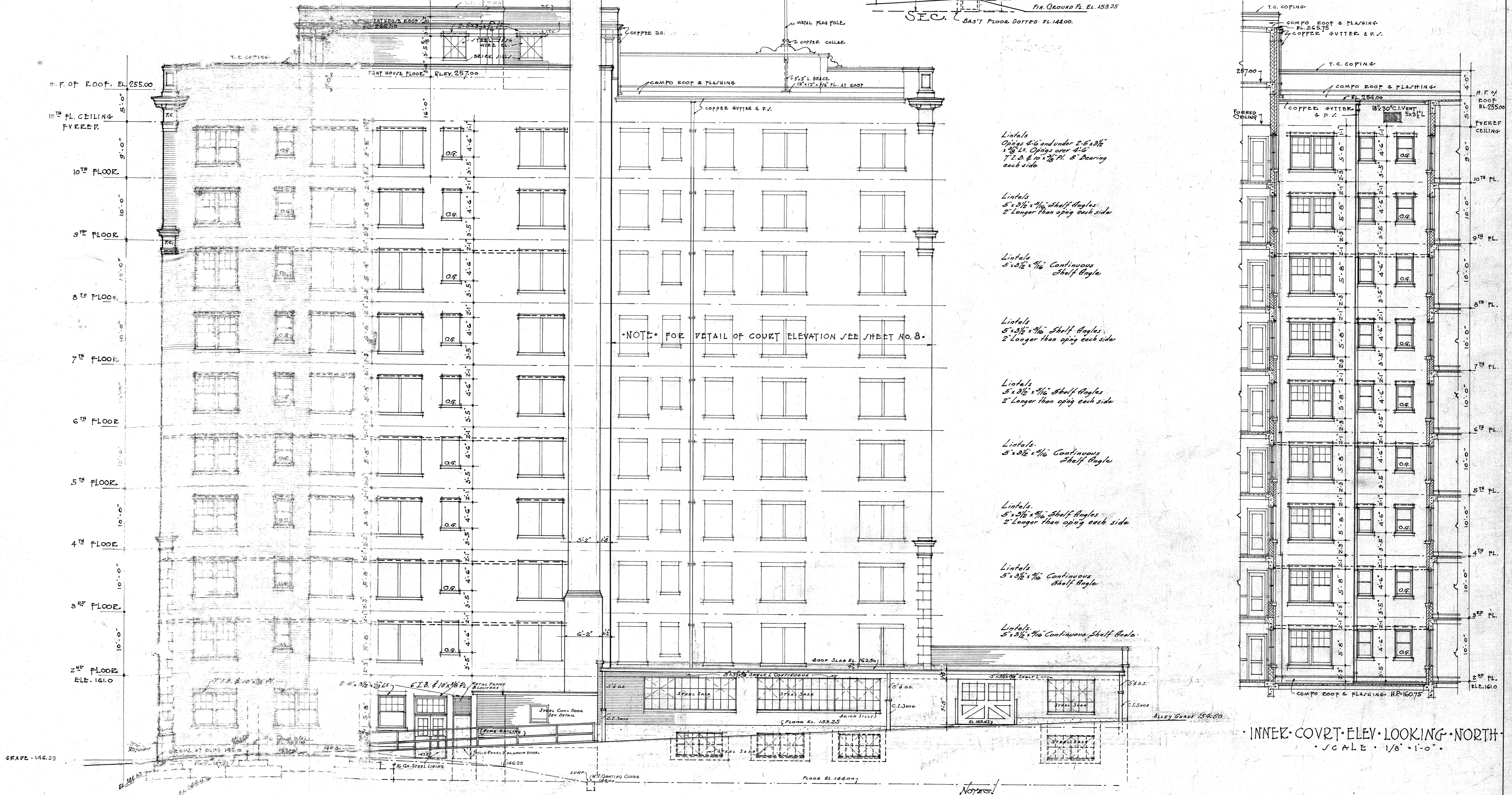
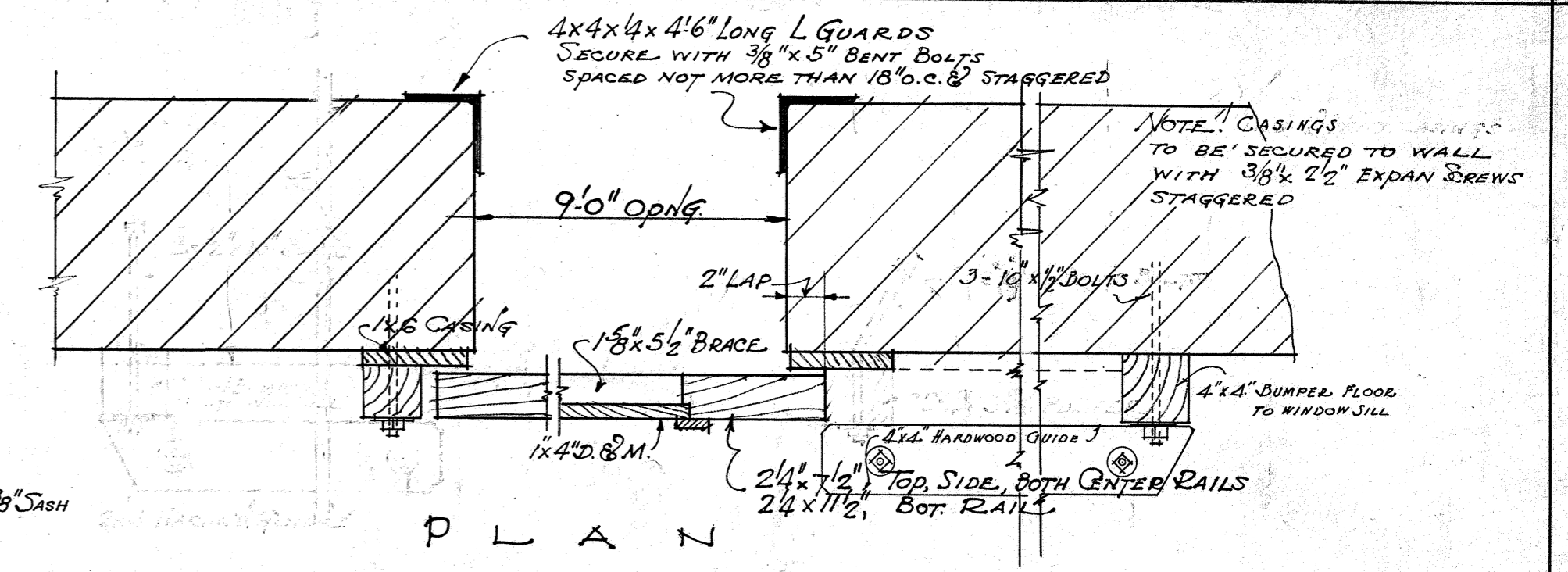
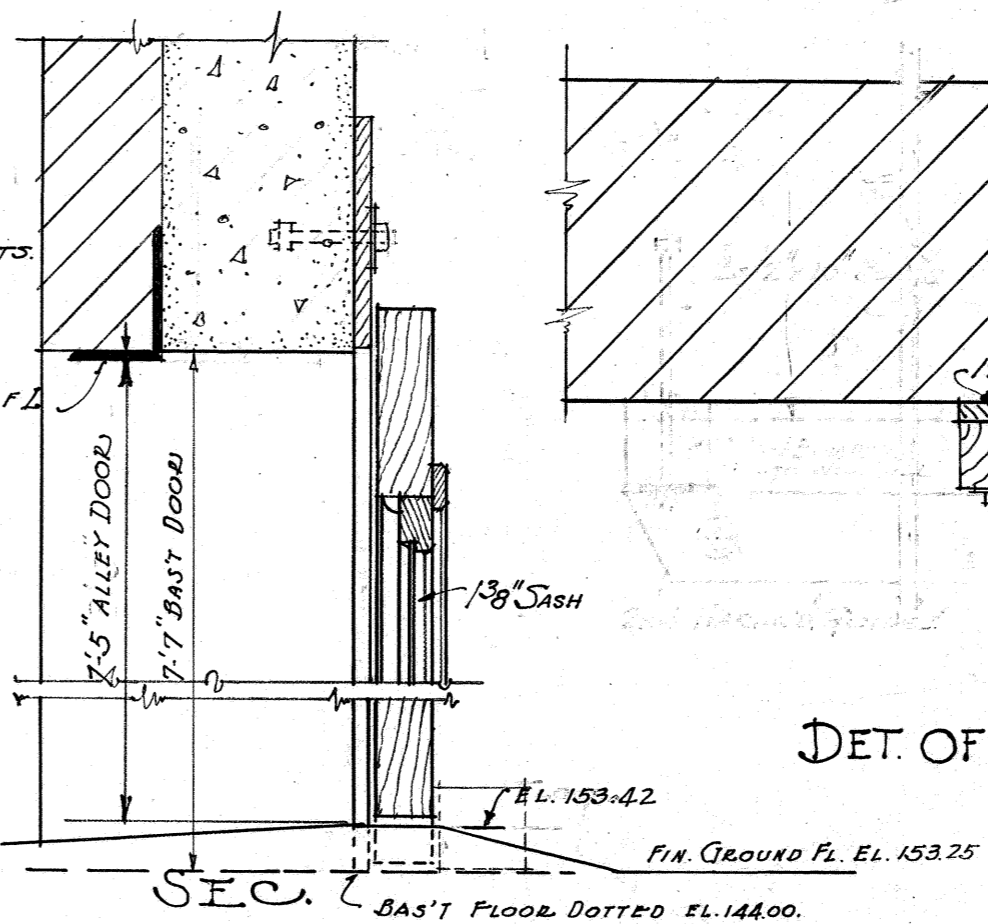


HARDWARE (RICHARDS WILCOX CATALOG # 16)

3 DOOR HANGERS # 282 B-2
 TRACK # 32
 11 BRACKETS # 1X32 & 2X32
 (SQUARE BRACKETS WITH 2X5 SPAN BOLTS)
 DOOR LATCH # 152 (ON INSIDE)
 3 W.I. BINDERS
 1 STAY ROLLER



WEST ALLEY ELEVATION
 SCALE 1/8" = 1'-0"

NOTE: All figures & memoranda to be checked by Contractor and errors referred to Architect for correction.

NOTES!

REPEAT ALL OPENINGS AND ORNAMENT ALL OPENINGS TO HAVE T.C. SILLS, WOOD FRAME & SASH GLAZED WITH PLATE GLASS, UNLESS OTHERWISE MARKED. WINDOWS MARKED O.G., TO HAVE OBSCURE GLASS IN LOWER SASH.

THE VERSAILLES APARTMENTS		Job No. 428
FOR THE VERSAILLES BUILDING CO.		DATE APR. 12-26
S.W. COR. SKINNER & ROSEBURY AVES. SAINT LOUIS, MISSOURI.		REVISED 7-30-27
PRESTON J. BRADSHAW ARCHITECT		SHEET NO. 6
INTERNATIONAL LIFE BLDG. ST. LOUIS, MO.		