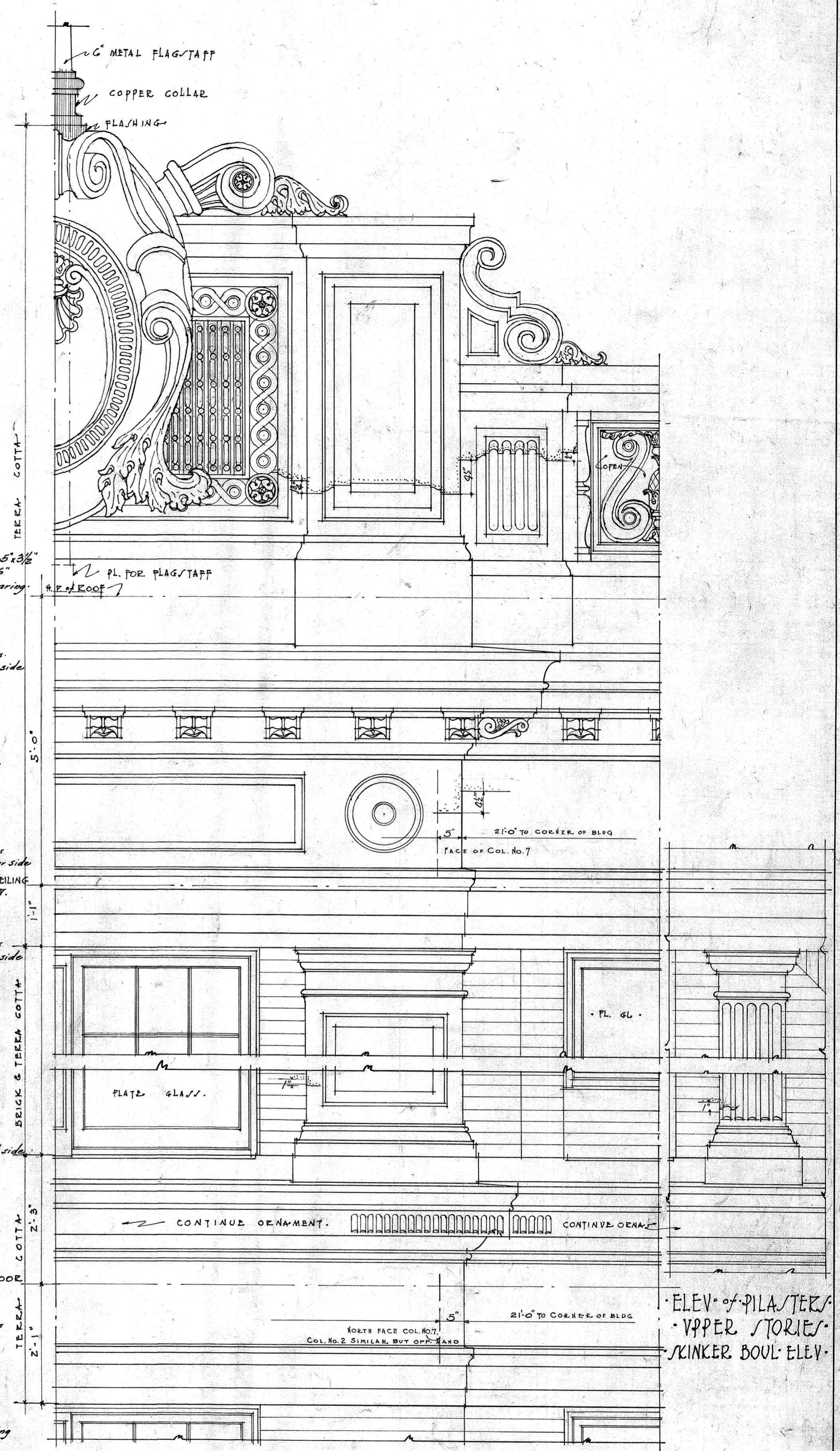


SOUTH ELEVATION
SCALE = 1/8" = 1'-0"

NOTE: All figures & memoranda to be checked by Contractor and errors referred to Architect for correction.

- Lintels: Opens 4'6" and under 2'-5 3/8" x 3/4". Opens over 4'-6" 7/8" & 10' 2 1/2" 1/8" bearing each side.
- Lintels: 5' 3 3/8" x 3/4" Shelf Angles 2" longer than opening each side.
- Lintels: 5' 3 3/8" x 3/4" Continuous Shelf Angle.
- Lintels: 5' 3 3/8" x 3/4" Shelf Angles 2" longer than opening either side.
- Lintels: 5' 3 3/8" x 3/4" Shelf Angles 2" longer than opening each side.
- Lintels: 5' 3 3/8" x 3/4" Continuous Shelf Angle.
- Lintels: 5' 3 3/8" x 3/4" Shelf Angles 2" longer than opening each side.
- Lintels: 5' 3 3/8" x 3/4" Continuous Shelf Angle.
- Lintels: 2'-5 3/8" x 3/4" 1/8" bearing each side.



3/4 SCALE DETAIL OF PAVILION UPPER STORIES
SKINKER BOUL. ELEV.

NOTES:
REPEAT ALL OPENINGS & ORNAMENT.
ALL OPENINGS TO HAVE T.C. SILLS, WOOD FRAMING & FLASHING.
GLAZED WITH PLATE GLASS UNLESS OTHERWISE NOTED.
WINDOWS MARKED O.G. TO HAVE OBTUSE GLASS IN LOWER PART.

THE VERSAILLES APARTMENTS	Job No. 428
FOR THE VERSAILLES BUILDING	DATE APR. 12-26
3-W. COR. SKINKER & ROSEBURY AVES.	REVISED 9-30-27
SAINT LOUIS, MISSOURI	11-30-27
PRESTON J. BRADSHAW ARCHITECT	SHEET No. 7
INTERNATIONAL LIFE BLDG. ST. LOUIS, MO.	