



• COURT ELEVATION • LOOKING EAST •  
 • SCALE • 1/8" = 1'-0" •

NOTE: All figures & memoranda to be checked by Contractor and errors referred to Architect for correction.

Lintels:  
 Openings 4'-6" and under 2'-5 3/8"  
 1 1/2" x 1/2" Openings over 4'-6"  
 1 1/2" x 1 1/2" x 1/2" H. & S. bearing each side.

Lintels:  
 5" x 3 1/2" x 1/2" Shelf Angles.  
 2" Longer than opening each side.

Lintels:  
 5" x 3 1/2" x 3/8" Continuous Shelf Angle.

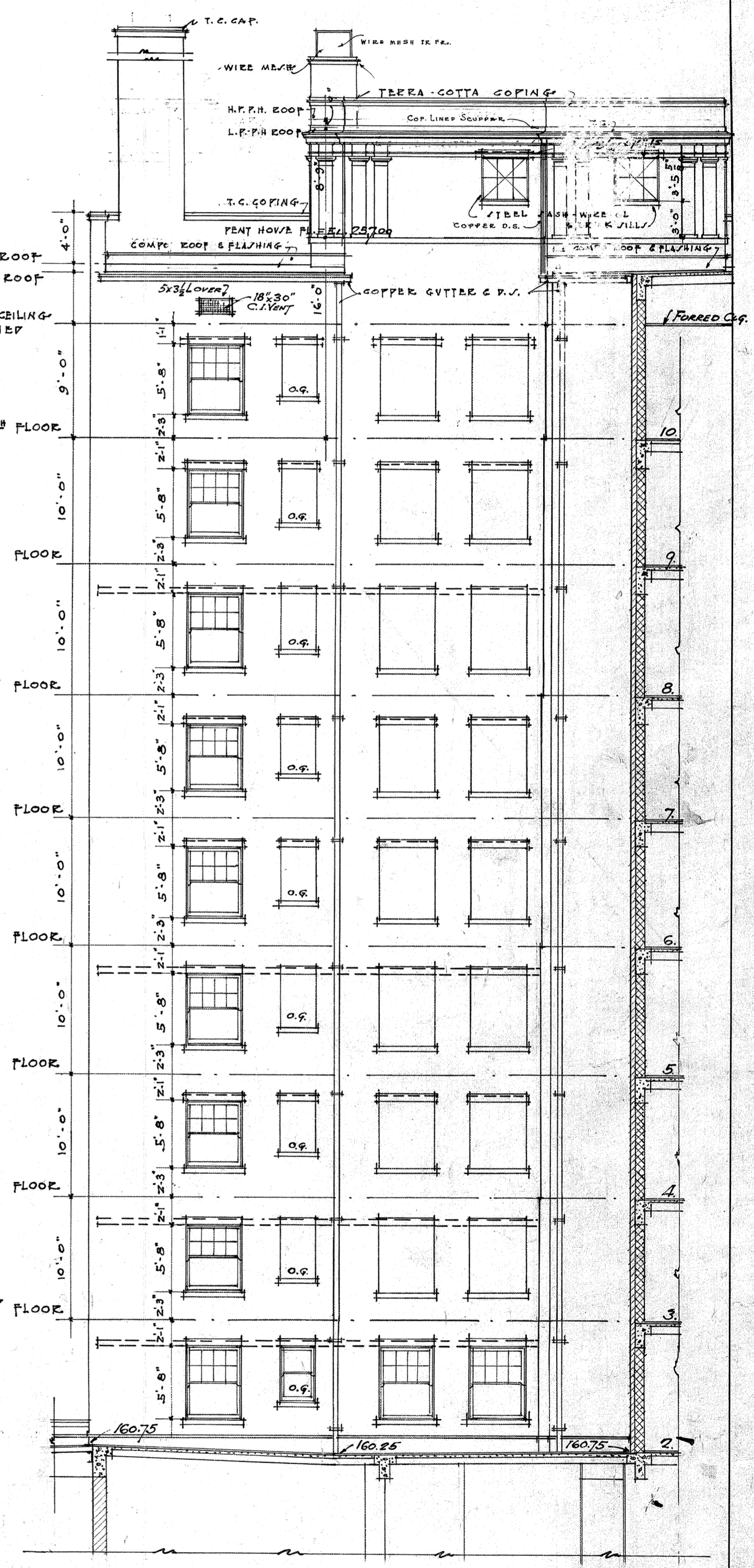
Lintels:  
 5" x 3 1/2" x 1/2" Shelf Angles.  
 2" Longer than opening each side.

Lintels:  
 5" x 3 1/2" x 1/2" Shelf Angles.  
 2" Longer than opening each side.

Lintels:  
 5" x 3 1/2" x 1/2" Shelf Angles.  
 2" Longer than opening each side.

Lintels:  
 5" x 3 1/2" x 1/2" Continuous Shelf Angle.

NOTES!  
 REPEAT ALL OPENINGS & ORNAMENT  
 ALL OPENINGS TO HAVE T.C. SILLS, WOOD FRAMES & SASH GLAZED WITH PLATE GLASS, UNLESS OTHERWISE NOTED  
 WINDOWS MARKED O.G., TO HAVE OBSCURE GLASS IN LOWER SASH



• COURT ELEVATION • LOOKING WEST •  
 • SCALE • 1/8" = 1'-0" •

THE VERSAILLES APARTMENTS FOR THE VERSAILLES BUILDING CO. S.W. COR. SKINNER & ROSEBURY AVES. SAINT LOUIS, MISSOURI		JOB No. 428 DATE APR. 12 - 26 REVISED 11 - 5 - 27
PRESTON J. BRADSHAW ARCHITECT INTERNATIONAL LIFE BLDG. ST. LOUIS, MO.		SHEET No. 8