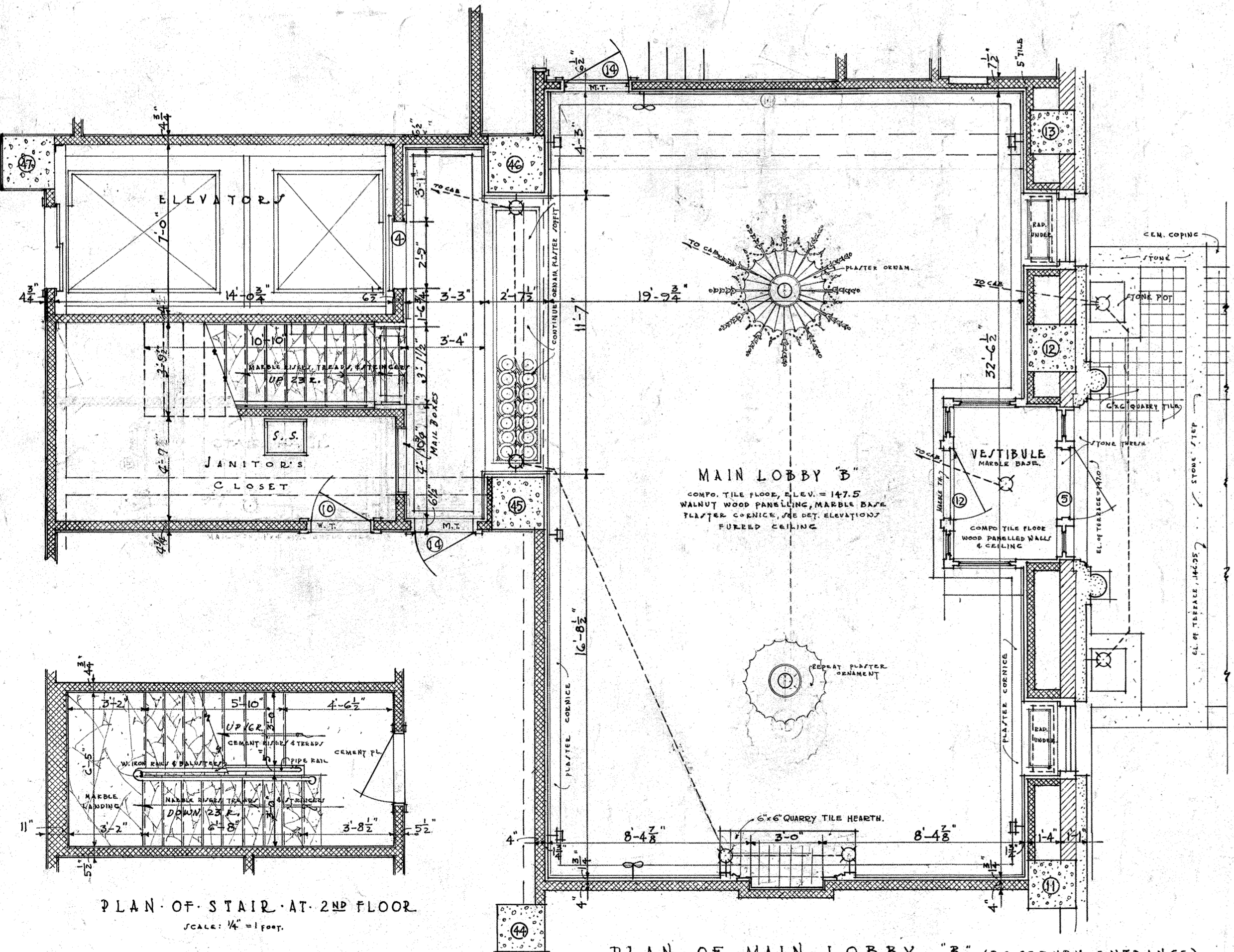
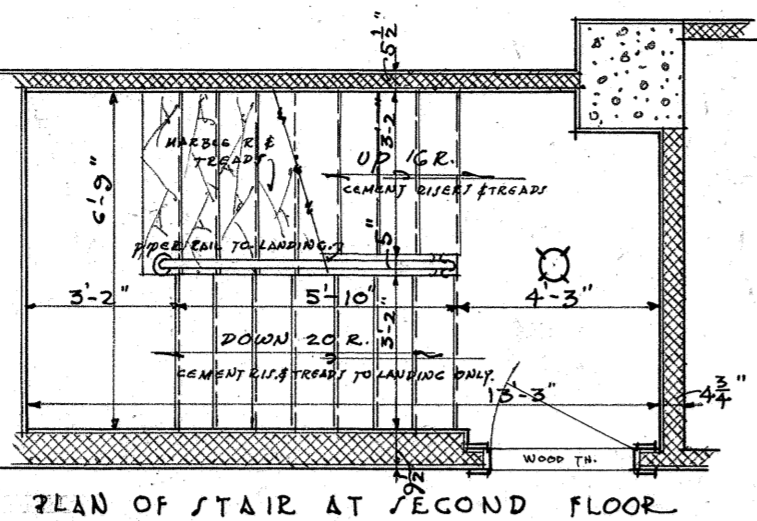


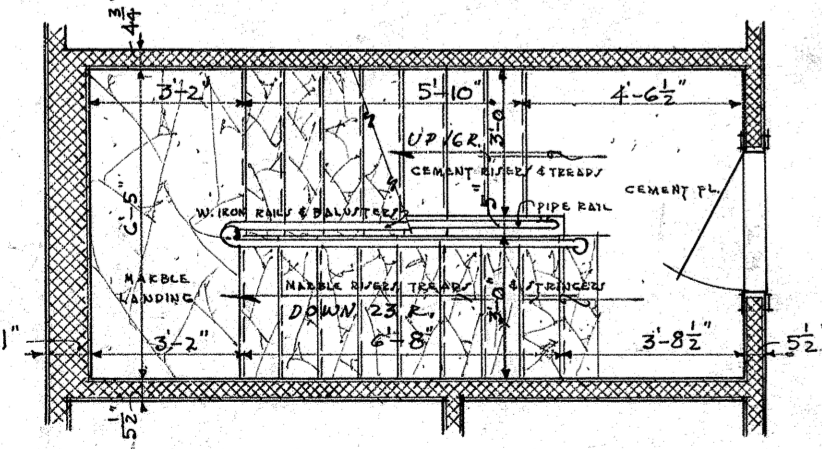
PLAN OF MAIN LOBBY "A" (SKINKER ENTRANCE)
SCALE: 1/4" = 1 FOOT



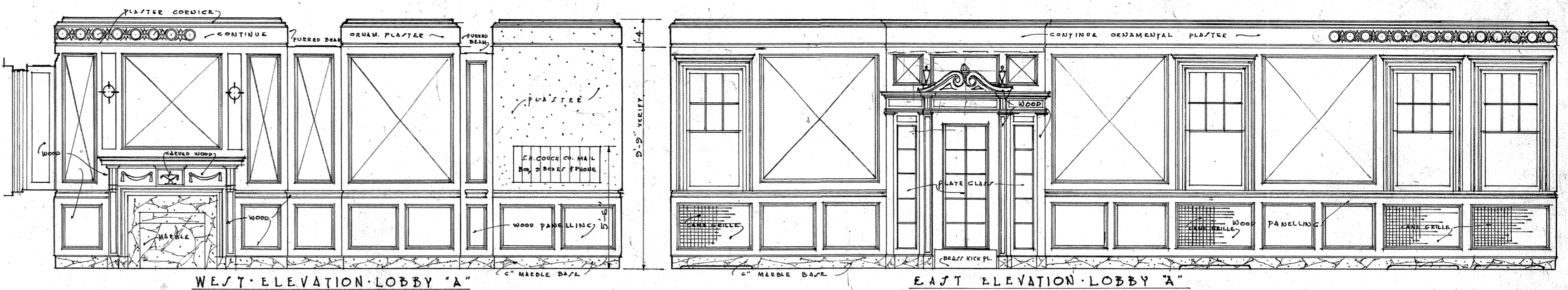
PLAN OF MAIN LOBBY "B" (ROSEBURY ENTRANCE)
SCALE: 1/4" = 1 FOOT



PLAN OF STAIR AT SECOND FLOOR

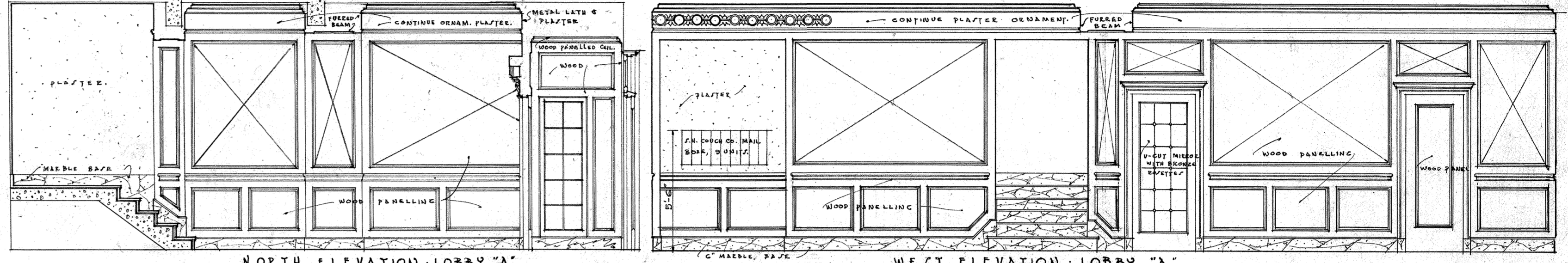


PLAN OF STAIR AT 2ND FLOOR
SCALE: 1/4" = 1 FOOT



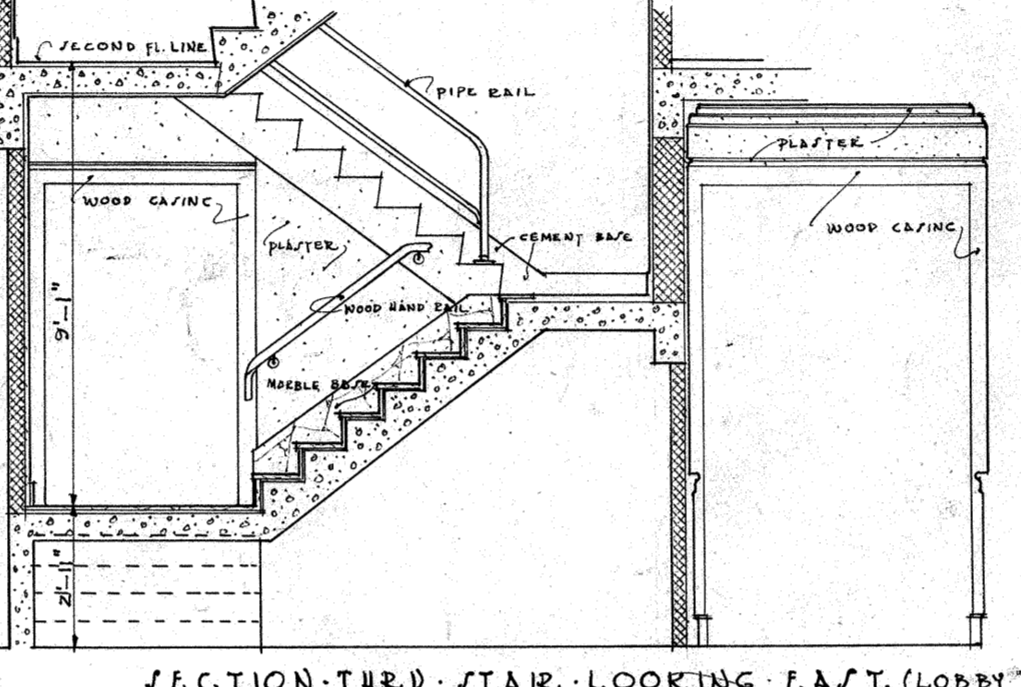
WEST ELEVATION LOBBY "A"

EAST ELEVATION LOBBY "A"



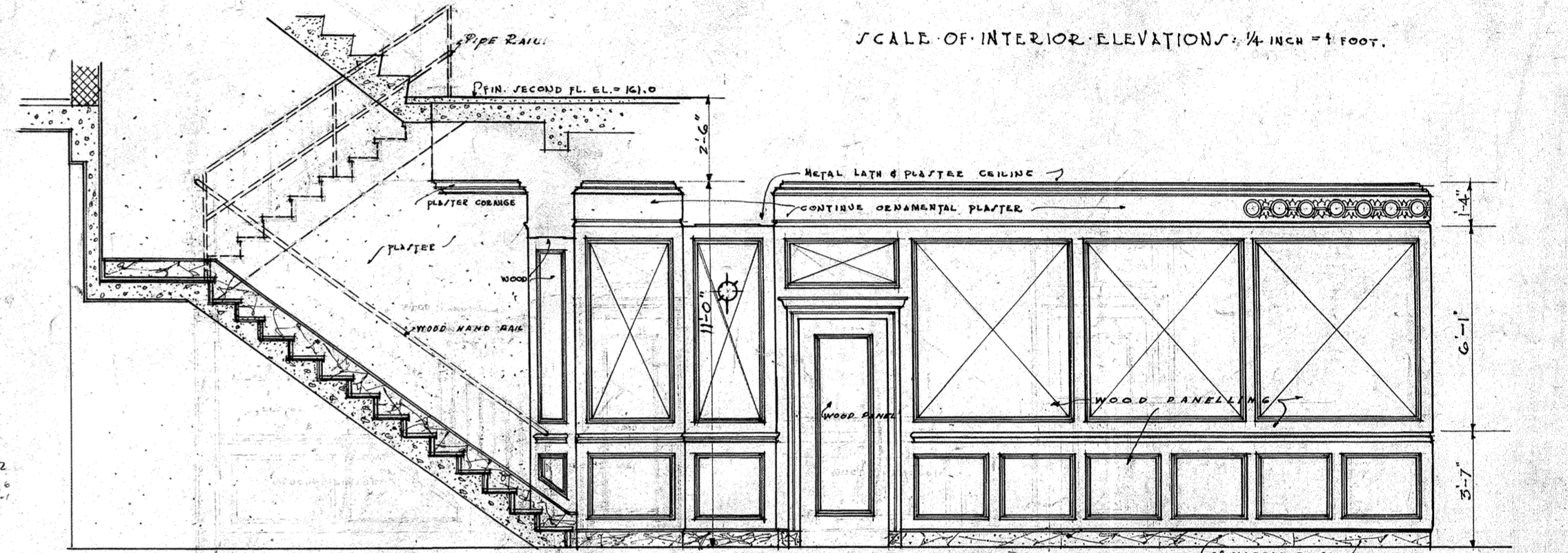
NORTH ELEVATION LOBBY "A"

WEST ELEVATION LOBBY "A"



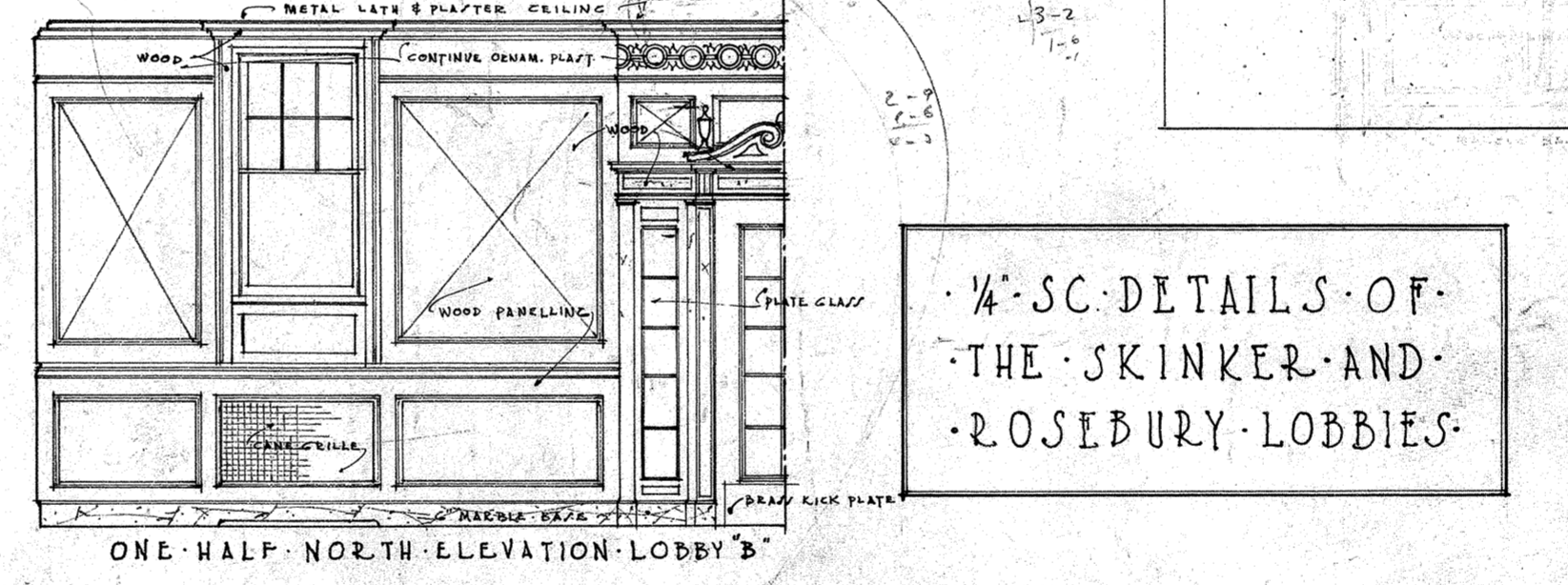
SECTION THRU STAIR LOOKING EAST (LOBBY "A")

NOTE: PANELS / ROUND CROSS / ED TREES ARE TO BE FINISHED IN PLAIN WOOD TO RECEIVE TAPESTRY COVER.

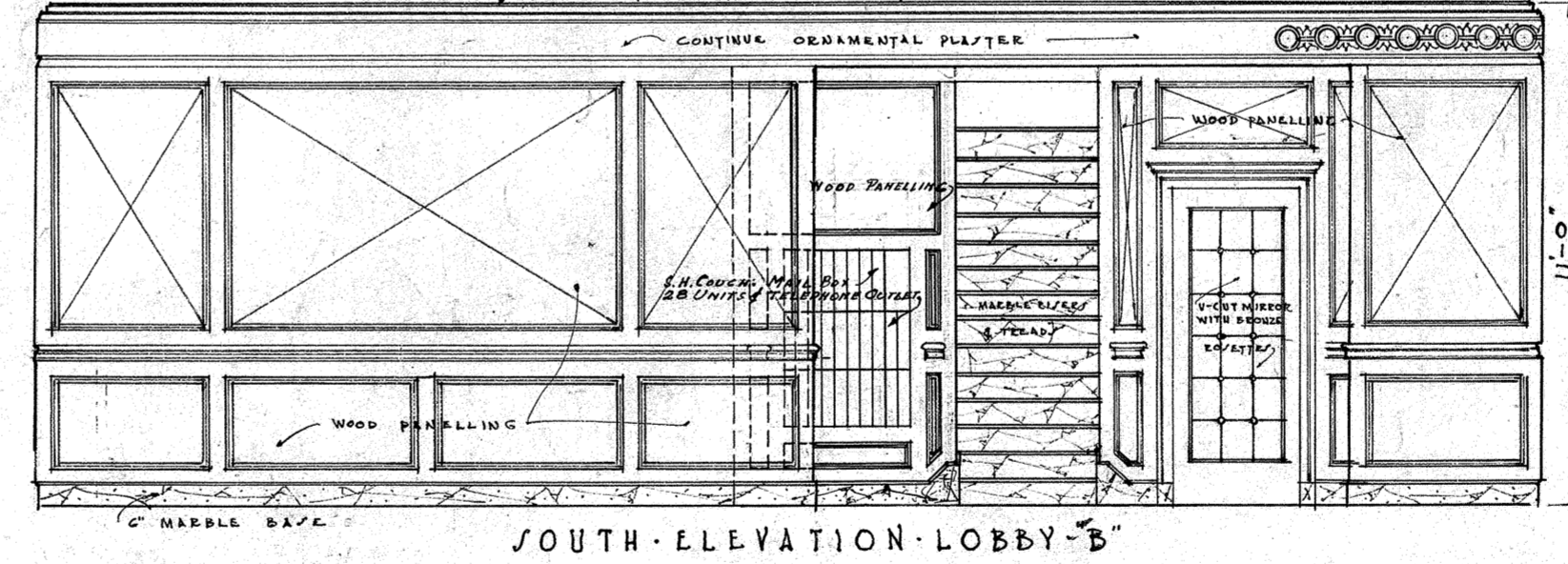


WEST ELEVATION "B": THRU STAIR HALL

SCALE OF INTERIOR ELEVATIONS: 1/4" = 1 FOOT

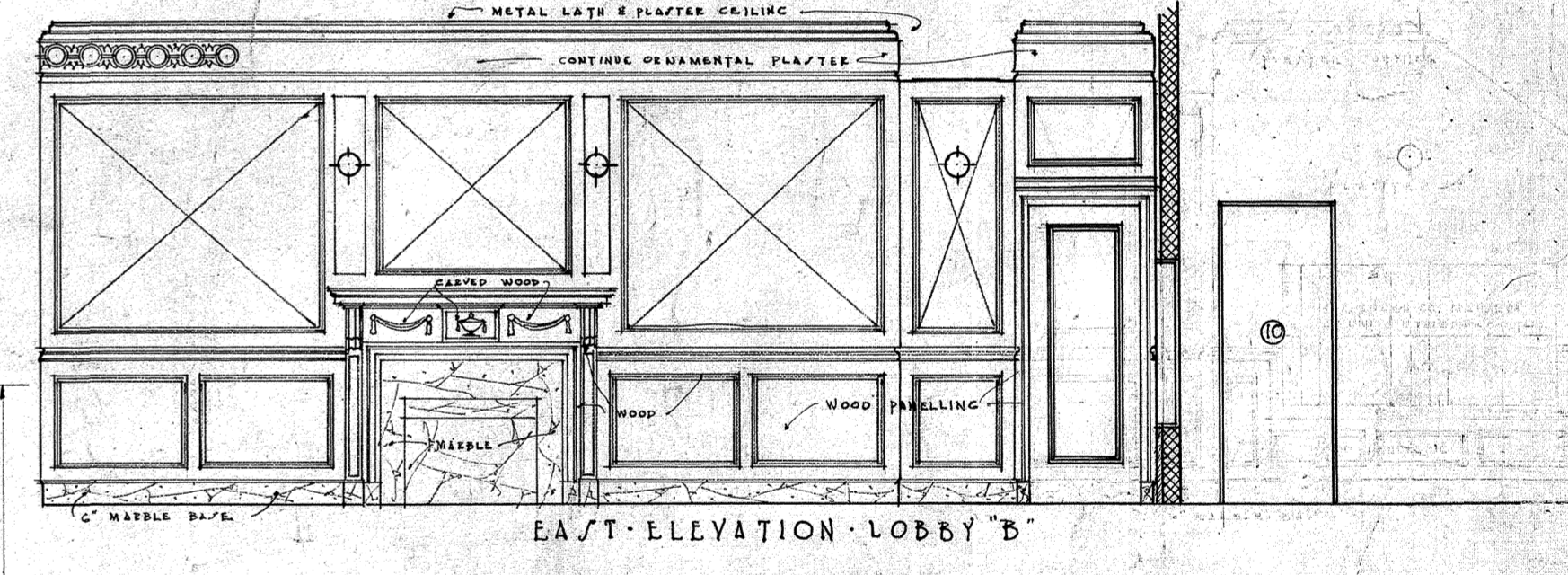


ONE-HALF NORTH ELEVATION LOBBY "B"



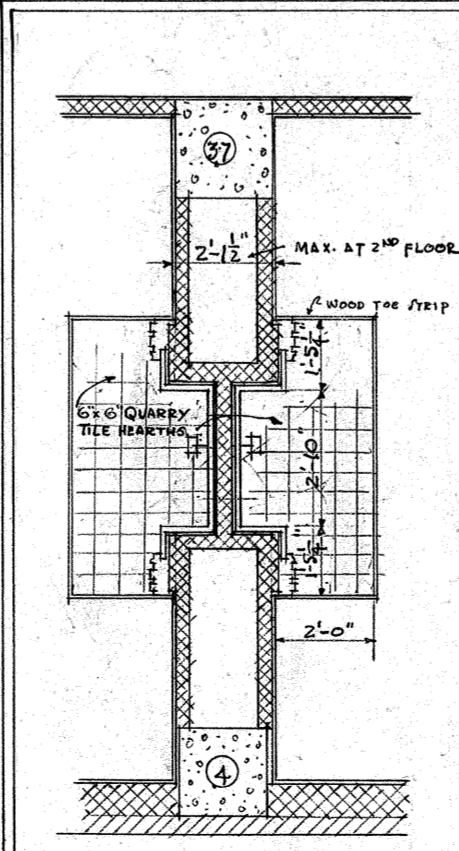
SOUTH ELEVATION LOBBY "B"

1/4" S.C. DETAILS OF THE SKINKER AND ROSEBURY LOBBIES

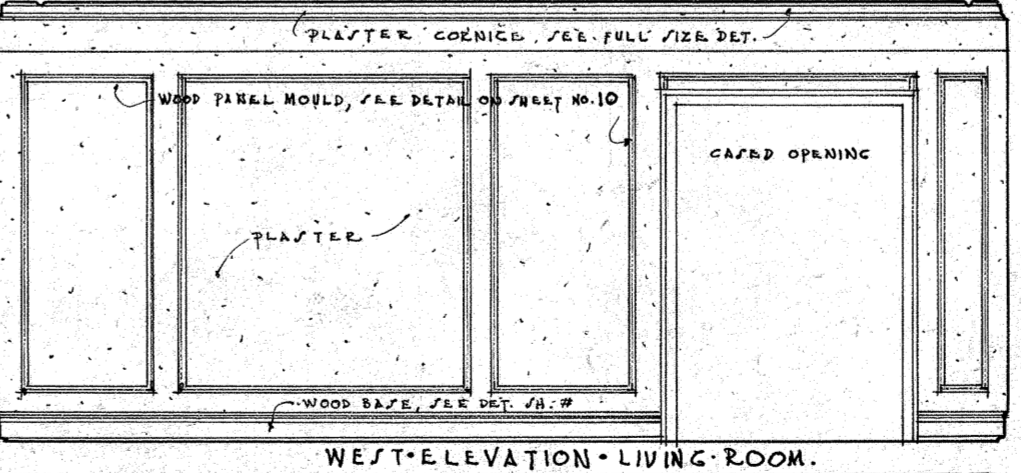


EAST ELEVATION LOBBY "B"

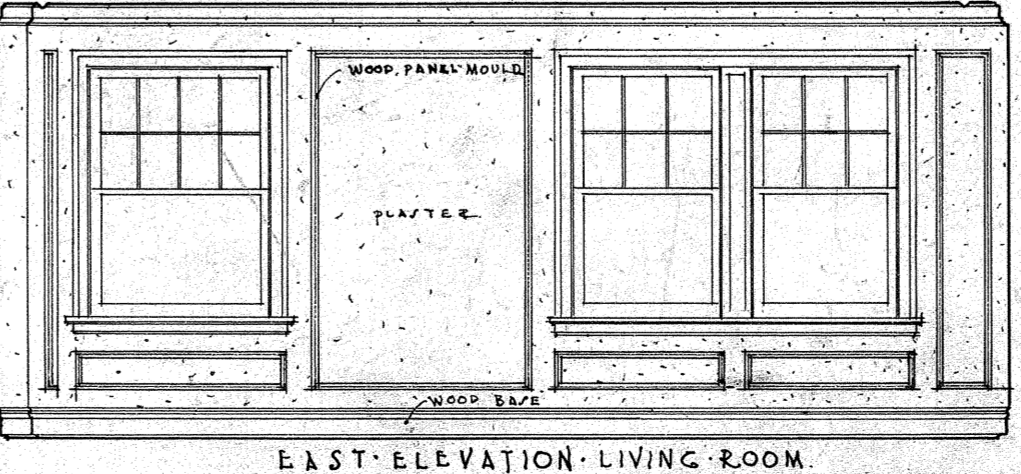
FULL SIZE DETAIL OF PLASTER CORNICE IN ALL TYPICAL LIVING ROOMS AND IN TYPICAL PUBLIC CORRIDORS & LOBBIES



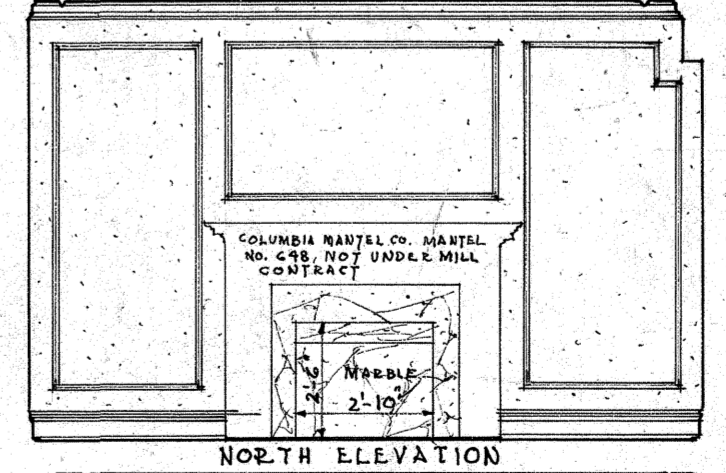
PLAN OF PARTITION BETWEEN LIVING ROOMS OF APARTMENTS "A" & "B"



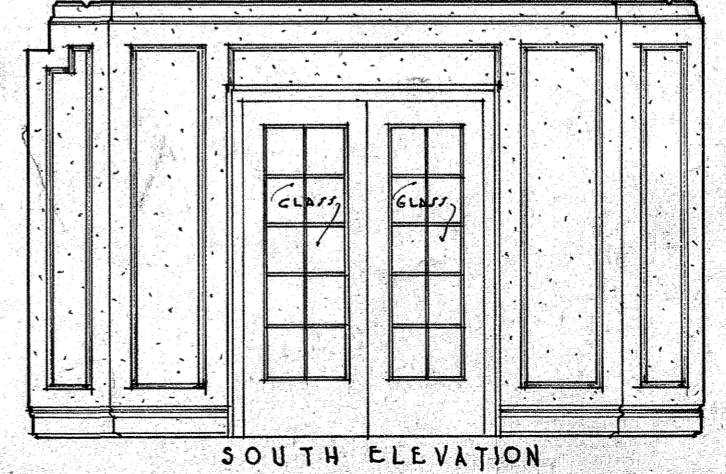
WEST ELEVATION LIVING ROOM



EAST ELEVATION LIVING ROOM



NORTH ELEVATION



SOUTH ELEVATION

1/4" S.C. ELEVATIONS OF LIVING ROOM TO ART. "B" LIVING ROOM TO ART. "A" & "C" SIMILAR: LIVING ROOMS TO ARTS. "D" & "E" SIMILAR BUT WITHOUT MANTEL

NOTE: All figures & memoranda to be checked by Contractor and errors referred to Architect for correction.

THE VERSAILLES APARTMENTS
FOR
THE VERSAILLES BUILDING CO.
S.W. COR. SKINKER & ROSEBURY AVES.
SAINT LOUIS, MISSOURI

PRESTON J. BRADSHAW
ARCHITECT
INTERNATIONAL LIFE BLDG. St. Louis, Mo.

JOB No. 428
DATE APR. 12-26
REVISED 4-28-27
11-5-27

SHEET No. 9