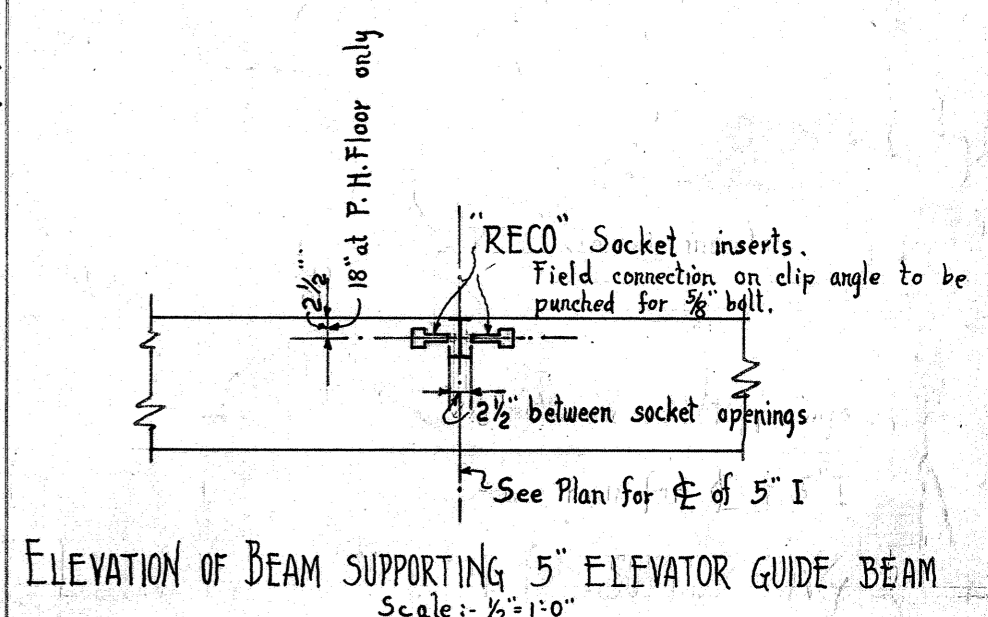
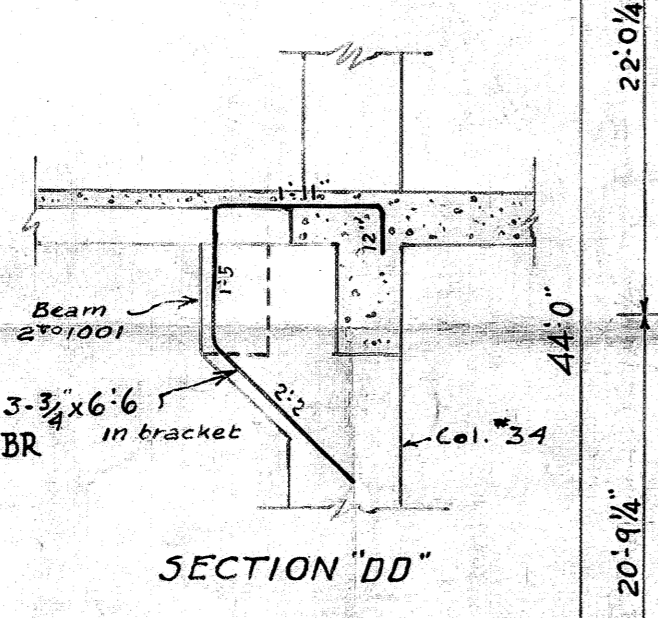
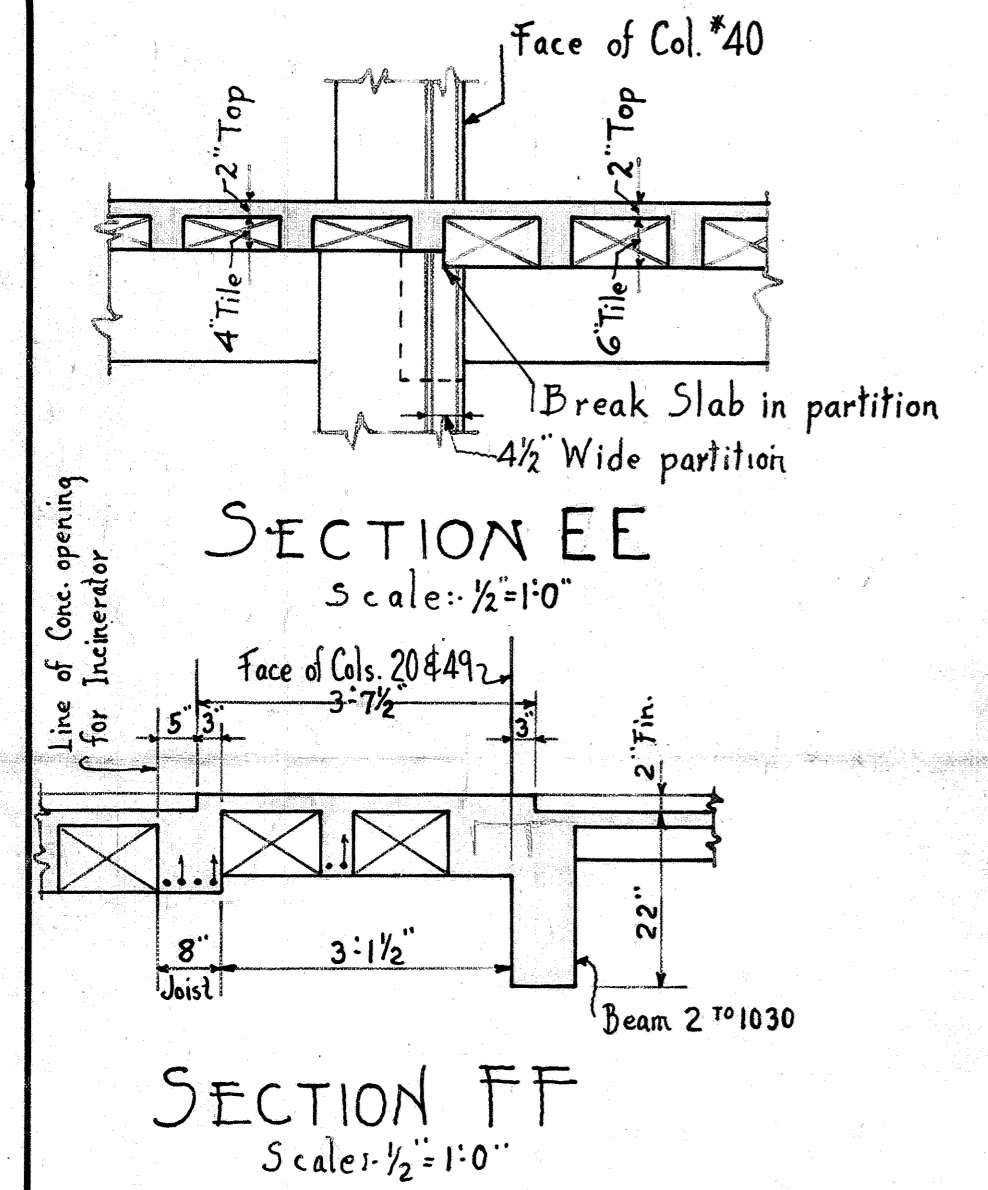
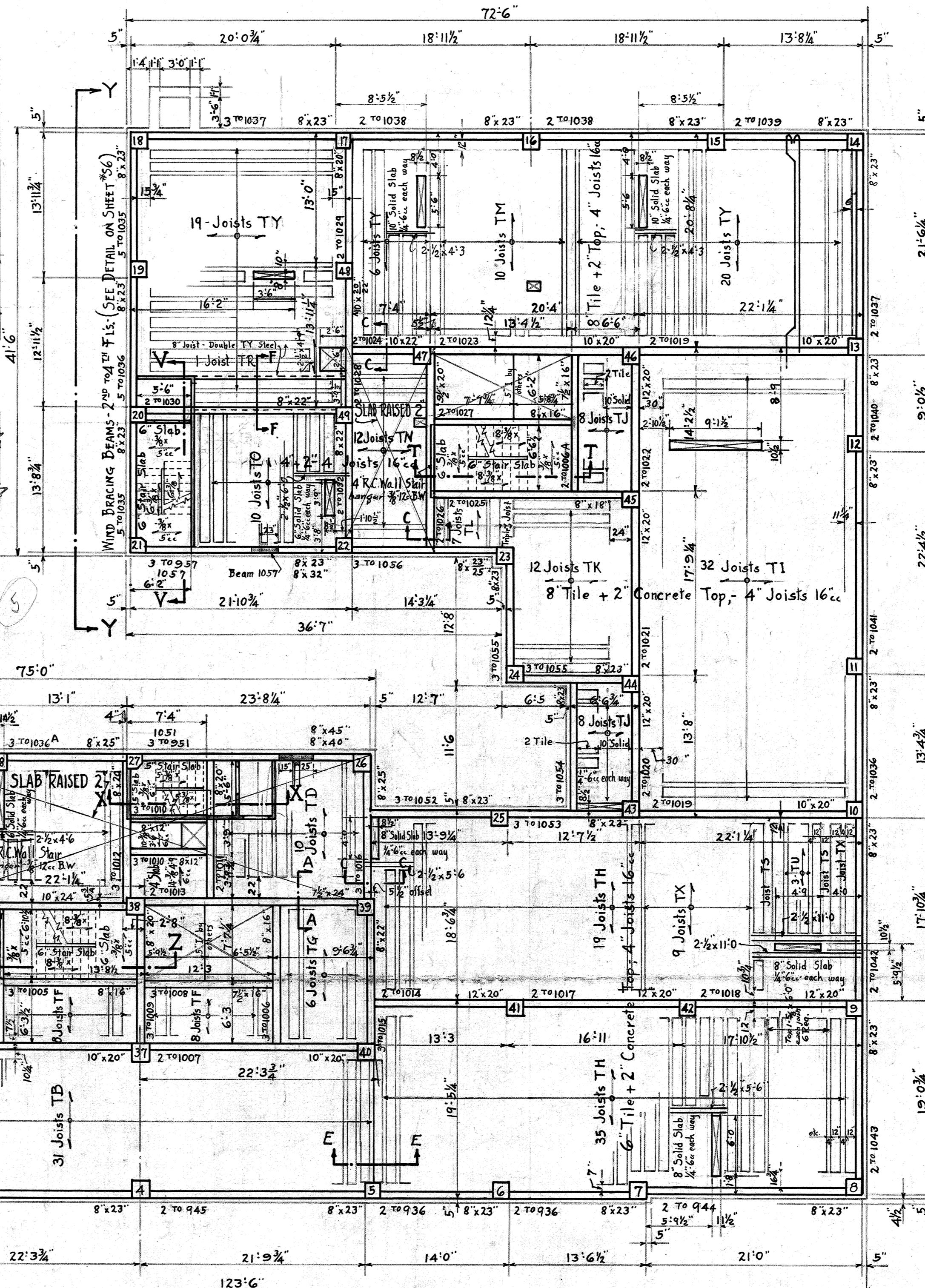
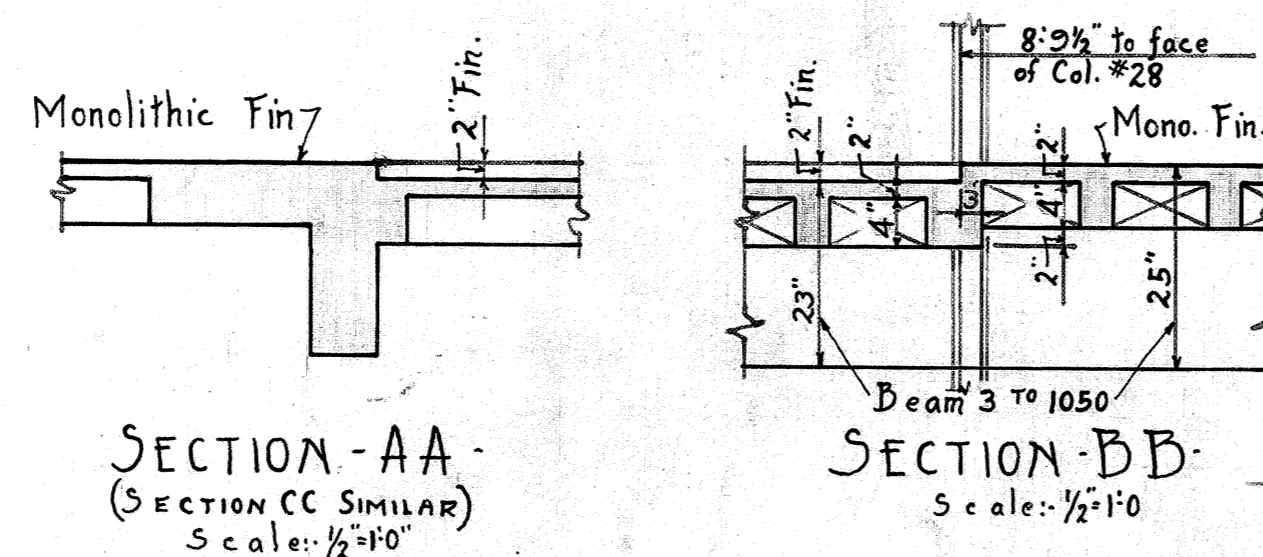


SLAB JOIST SCHEDULE

Slab No.	Slab Design	Mark	Top Straight	Bottom Straight	Bottom Dent	OUT TO OUT DIMENSION
10	4" x 2" Joists	TA	1 7/8 x 16 1/4	1 7/8 x 18 1/4	-	4" 8" 1'6" 6" 12'4" 6" 3'0" -
31	4" x 2" Joists	TB	1 1/2 x 14 1/4	1 7/8 x 17 1/4	-	4" 8" 1'6" 6" 8'7" 6" 6'0" -
25	4" x 2" Joists	TC	2 5/8 x 15 1/4	14'9"	-	-
7	4" x 2" Joists	TD	2 7/8 x 15 3/4	14'3"	-	-
17	4" x 2" Joists	TE	1 7/4 x 17 1/4	1 7/8 x 20 3/4	-	4" 8" 1'6" 6" 10'4" 6" 6'9" -
18	4" x 2" Joists	TF	1 1/2 x 9'0"	1 7/8 x 6'6"	-	-
-	5" Joists	TG	1 1/2 x 15 3/4	1 7/8 x 18 3/4	-	4" 8" 1'6" 6" 8'9" 6" 6'4" -
54	4" x 2" Joists	TH	1 7/8 x 19 1/4	1 7/8 x 22 1/4	-	6" 8" 1'6" 9" 11'8" 9" 7'2" -
32	4" x 2" Joists	TI	1 5/8 x 23'0"	1 3/4 x 26 1/4	-	8" 8" 1'6" 12" 13'10" 12" 8'6" -
16	4" Joists	TJ	1 3/8 x 9'0"	1 3/8 x 6'3"	-	-
12	4" Joists	TK	1 7/8 x 12 1/4	1 7/8 x 16 3/4	-	8" 8" 1'6" 12" 6'5" 12" 5'8" -
7	4" Joists	TL	1 1/2 x 5 1/4	-	-	-
10	4" Joists	TM	1 1/2 x 22 1/4	1 7/8 x 22 1/4	21'3"	8" 6" 1'6" 11 1/2" 16'10" 11 1/2" 1'6" 6"
12	4" Joists	TN	1 1/2 x 8'0"	-	-	-
10	4" Joists	TO	1 5/8 x 14 1/4	1 1/2 x 15'0"	13'5"	6" 1'6" 11 1/2" 9'1" 11 1/2" 1'6" 6"
18	4" Joists	TW	1 7/8 x 13 1/4	1 7/8 x 18 1/4	-	4" - 3'0" 6" 8'6" 6" 6'0" -
10	4" Joists	TX	1 7/8 x 19'0"	1 7/8 x 23 1/4	-	6" - 7'0" 9" 11'9" 9" 3'0" -
1	4" Joists	TR	1 3/4 x 19 1/4	1 5/8 x 19 1/4	18'3"	8" 6" 1'6" 11 1/2" 13'11" 11 1/2" 1'6" 6"
2	4" Joists	TS	3 3/4 x 19'0"	2 3/8 x 23 1/4	-	6" - 7'0" 9" 11'9" 9" 3'0" -
3	4" Joists	TU	2 1/2 x 12 1/4	-	-	-
45	4" Joists	TY	1 3/8 x 22'0"	1 3/8 x 24 1/4	-	8" 8" 1'6" 12" 17'0" 12" 3'1" -



NOTES

Provide 1/4"-18cc Temperature Rods over and at right angles to main reinforcement in all Slabs. 280-1/4" x 20'0" Req.

Provide 3/8"-18cc Both Ways in 4" Walls around fire escape stairs.

All rods to be round deformed.

FILE No. 3805 DATE 3-25-26
 DESIGNED BY A.P.
 DRAWN BY L.J.B.
 CHECKED BY AR LRV
 REVISIONS: Dim. changed; Drawing checked in 10-27 Part 10th Sp. Rms. set back

THE VERSAILLES APARTMENTS
 FOR THE VERSAILLES BUILDING CO.
 S.W. COR. SKINNER & ROSEBURY AVES.
 SAINT LOUIS, MISSOURI

PRESTON J. BRADSHAW
 ARCHITECT
 INTERNATIONAL LIFE BLDG. ST. LOUIS, MO.

BRUSSEL AND VITERBO
 ENGINEERS

Job No. 426
 DATE: Apr. 12-26
 REVISED
 SHEET No. 53